

Liquidity Provision and Co-insurance in Bank Syndicates

Kevin Kiernan

Vladimir Yankov

Filip Zikes*

March 8, 2023

Abstract

We develop a simple model of the liquidity and insurance capacity of the interbank network arising from loan syndication. We find that the liquidity capacity has increased significantly following the introduction of liquidity regulation, and that the liquidity co-insurance is economically important for the corporate sector. We also find that borrowers with higher reliance on credit lines have become more likely to obtain credit lines from syndicates with higher liquidity capacities. The increase in liquidity capacities and the assortative matching on liquidity characteristics has strengthened the importance of large banks as liquidity providers to the corporate sector.

JEL CLASSIFICATION: G21, G18, L14

KEYWORDS: Liquidity Insurance, Liquidity Regulation, Interbank networks, Syndicated Credit Lines

*Kiernan, kevin.kiernan@fanniemae.com, Fannie Mae; Yankov, vladimir.l.yankov@frb.gov, Division of Financial Stability, Federal Reserve Board; Zikes, filip.zikes@frb.gov, Division of Financial Stability, Federal Reserve Board. The views expressed in this paper are those of the authors and do not represent the views of the Federal Reserve Board or any other person associated with the Federal Reserve System. We thank Fang Cai, Ben Craig, Thomas Eisenbach, Antonio Falato, Zhiguo He (discussant), Andreas Lehnert, Carlos Ramírez, Beth Klee, John Schindler, Victoria Ivashina, Teodora Paligorova, Ralf Meisenzahl (discussant), Jessie Wang (discussant), Russell Wong, Jan-Peter Siedlarek, Antoinette Schoar, and Joshua Strazanac as well as participants at seminars and workshops at the Federal Reserve Board, Federal Reserve Bank of Richmond, 2021 Financial Stability Conference at the Federal Reserve Bank of Cleveland, 52nd Annual Conference of the MMF Society, and the Midwest Economic Association annual meeting for helpful comments and discussions.

1 Introduction

Liquidity dried up in the early stages of the 2007-09 Global Financial Crisis (GFC), hampering banks' ability to meet credit line drawdowns by the corporate sector without explicit public liquidity support (Acharya and Mora, 2015). In part to minimize reliance on public liquidity backstops, post-crisis liquidity regulation requires large banks to accumulate high-quality liquid assets (HQLA) and align their liquidity positions with the credit commitments to the corporate sector (Yankov, 2020). However, the post-crisis liquidity regulation was largely designed as a micro-prudential tool, targeting individual bank balance sheets rather than the liquidity capacity of the banking system as a whole. Thus, while individual large U.S. banks now have strong liquidity positions well above the regulatory minima, the ability of the banking system as a whole to withstand large simultaneous drawdowns on credit lines has yet to be assessed.

We take a step in this direction and study the capacity of the banking system to provide liquidity to the corporate sector in times of stress and how changes in this capacity affect corporate liquidity management. We begin by showing that to fully characterize banks' liquidity capacity, one needs to take into account the contractual obligations among banks that arise in the process of loan syndication. There are more than \$4 trillion dollars in credit line commitments originated by bank syndicates, where multiple bank lenders pool the funding and liquidity risks associated with these commitments. Furthermore, syndicated credit lines contain components, which are referred to as sublimits, that allow the borrower or a third party to draw funds on a very short notice, and a designated bank in the syndicate, the so-called fronting bank, has an obligation to advance (front) the funds on behalf of the whole syndicate. We document that fronting commitments total close to \$300 billion (Figure 4) and represent an interbank market that co-insures liquidity risks of large credit line drawdowns and provides insurance to corporate borrowers against illiquidity of syndicate member banks.

Because banks participate in many syndicated credit facilities, sometimes as fronting banks and at other times as member banks, loan syndication creates a network of interbank exposures. We show that this interbank network has a well-defined core-periphery structure that remains relatively stable over our sample period. The core consists predominantly of the largest banks, which both provide and obtain fronting commitments to and from one another. Furthermore, the fronting exposures are highly concentrated at a few banks in the core, and these banks provide the bulk of the liquidity insurance associated with sublimits. The periphery is populated mainly by smaller

banks, which rarely serve as fronting banks and obtain most of their fronting commitments from banks in the core.

To measure the liquidity capacity of the banking system, we construct a simple model that explicitly accounts for the interconnectedness that arises from loan syndication. The model incorporates stress scenarios in which a large fraction of firms draw on their credit lines, and banks simultaneously experience outflows of short-term wholesale funding (STWF). To find the feasible payments given the demand for liquidity from the corporate sector, the associated interbank obligations, and the available balance sheet liquidity, we employ an equilibrium clearing mechanism similar to [Eisenberg and Noe \(2001\)](#). The model assumes that banks have limited liability and ration liquidity across their obligations—both to the corporate sector and to other banks in the network. The equilibrium feasible payments allow us to calculate the system-wide liquidity shortfall under various liquidity stress scenarios, the amount of liquidity insurance provided by fronting banks to the corporate sector, and the impact of the credit line drawdowns on banks’ regulatory capital and liquidity ratios.

We calibrate the model using detailed micro level data and compare banks’ liquidity capacity for both the period leading up to the GFC and the period following the GFC characterized by the introduction of liquidity regulation. We establish four main stylized facts about banks’ liquidity capacity. First, we find that the liquidity capacity of the banking system has expanded significantly following the GFC, in part thanks to new liquidity and capital regulation of large banks. Fewer large banks, and especially those in the core of the fronting exposures network, are likely to experience liquidity distress under hypothetical scenarios of severe drawdowns on credit lines by the corporate sector. The increase in the liquidity capacity at large banks is driven by both increases in balance sheet liquidity and declines in the reliance on STWF. For smaller banks, which are not subject to the new post-crisis regulation and have not increased their holdings of liquid assets to same extent as large banks, the contribution to the increase in the liquidity capacity of the system comes mainly from the decline in their reliance on STWF.

Second, we find that the fronting commitments provide an economically significant amount of liquidity insurance to the corporate sector. In terms of the most liquid component of credit lines—the sublimits—the insurance provided by the fronting banks accounts for a large share of the sublimit draws—up to 35 percent in 2006 and 20 percent in 2019. Furthermore, we document that the effective reallocation of liquidity through fronting shifted from reallocation among banks in the core of the network just prior to the GFC to reallocation from the core to the periphery

in the post-GFC period. This shift in liquidity reallocation was due to the significant increases in liquidity positions of core banks relative to banks in the periphery. Indeed, none of the banks in the core of the network that, on net, provide the bulk of fronting commitments experience liquidity shortfalls even in the most severe stress scenario, unlike in the pre-GFC period, where net fronting banks would have run out of liquidity in the same stress scenario.

Third, we show how the credit line drawdowns under the different stress scenarios affect large banks' regulatory liquidity and capital requirements, the two key balance sheet constraints facing large banks. The liquidity coverage ratio (LCR) requires large banks to hold a sufficient amount of high quality liquid assets (HQLAs) to sustain large but plausible outflows of liquidity over a one-month period. We document that the largest banks, which form the core of the fronting network, have become significantly more liquid and better-capitalized relative to their credit line exposures. However, the ability of banks in the core to perform their liquidity insurance function crucially depends on their ability to dip into their liquidity buffers under LCR requirements. Should these banks be required to maintain a minimum LCR at all times, they would no longer perform a stabilizing function and would instead contribute to the liquidity shortfall in the network. In contrast, we find that regulatory capital constraints are not binding even in the most severe drawdown scenario we consider in part because regulatory capital already incorporates a 50 percent drawdown rate for undrawn credit line commitments, mitigating impact of the actual drawdowns on the capital ratios.

We finally relate our liquidity capacity measures to the liquidity management choices of the corporate sector. We build on the theoretical work of [Holmström and Tirole \(1998\)](#), which shows that banks' liquidity capacity is jointly determined with the liquidity management choices of the corporate sector. We document that banks' liquidity positions influence borrowers' liquidity management choices, and we establish that firms with high reliance on credit lines and sublimits in their liquidity management obtain credit lines from syndicates with stronger liquidity positions. Furthermore, such assortative matching on liquidity characteristics has become more pronounced in the post-GFC period with the introduction of liquidity regulation. The non-random association between bank liquidity capacities and firms' liquidity choices also affects the pricing of credit lines. On the demand side, firms with greater reliance on credit lines and sublimits are charged higher spreads, controlling for firm risk characteristics. On the supply side, syndicates with higher liquidity capacities charge lower spreads, controlling for firm and bank characteristics.

Our paper relates to a large literature that studies the role of banks as liquidity providers to

the corporate sector. [Kashyap et al. \(2002\)](#), [Gatev and Strahan \(2006\)](#), and [Gatev et al. \(2009\)](#) show that there is synergy between the businesses of deposit-taking and lending under commitment, which gives banks a unique advantage among financial institutions to become liquidity providers to the corporate sector. The synergy hypothesis has been questioned by a number of papers. [Pennacchi \(2006\)](#) emphasizes that government guarantees and deposit insurance are more important factors behind banks' ability to serve as liquidity providers. Indeed, [Acharya and Mora \(2015\)](#) provide evidence that, had it not been for government support, banks would not have been able to honor credit line drawdowns during the GFC by relying on deposit inflows alone. Furthermore, [Ivashina and Scharfstein \(2010\)](#) and [Cornett et al. \(2011\)](#) show that nonfinancial firms heavily drew on their credit lines during the GFC in a run-like fashion out of concern about banks' deteriorating liquidity positions.

The reliability of credit lines as a liquidity management tool by the corporate sector has been questioned by [Sufi \(2007\)](#), who documents the presence of restrictive covenants that make credit lines less valuable liquidity management tools as compared to cash accumulation. [Acharya et al. \(2020\)](#) show that shocks to bank liquidity due to exposures to the asset-backed commercial paper (ABCP) market led to significant ex-post cuts and tightening of terms on credit lines for firms violating covenants. However, [Santos and Viswanathan \(2020\)](#) show that, thanks to long-term relationships and reputation concerns, credit lines offer significant liquidity insurance to large borrowers during recessions even when credit rating downgrades and covenant violations were imminent. [Acharya et al. \(2013\)](#) test the determinants of the choice between cash and credit lines as a function of firms' systemic risk and show that large, less systemic, and high credit quality firms are more likely to rely on bank credit lines for their liquidity management. [Acharya et al. \(2021a\)](#) show that large and high credit quality firms are more likely to rely on bank credit lines for their liquidity management in stress periods. To the best of our knowledge, the liquidity coinsurance features of syndication, their implications for liquidity provision and corporate liquidity management choices have not been discussed in the literature. Several papers document the persistence of lending relationships in the syndicated loan market and the effect of lead bank health on firm outcomes. For example, [Chodorow-Reich \(2014\)](#) document that bank health affects firm employment during the GFC. [Schwert \(2018\)](#) documents that more bank-dependent firms match with better-capitalized banks. This assortative matching leads to less volatile credit provision to those firms. To the best of our knowledge, our results on assortative matching on liquidity characteristics are also novel to this literature.

Recent papers have examined the role of banks as liquidity providers during the COVID-19 pandemic. [Chodorow-Reich et al. \(2021\)](#), [Kapan and Minoiu \(2020\)](#), [Li et al. \(2020\)](#), [Acharya and Steffen \(2020\)](#), [Acharya et al. \(2021b\)](#), and [Greenwald et al. \(2020\)](#) emphasize that banks served as liquidity providers, absorbing significant credit line drawdowns from large corporations. However, none of these papers explicitly document the significant changes in banks’ liquidity capacity that have occurred due to liquidity regulation implemented in the post-GFC period.

Our paper is also related to the literature studying the role of interbank networks in insuring against liquidity shocks as first highlighted by [Allen and Gale \(2000\)](#). The core-periphery structure of the fronting exposure network is a common feature of many financial networks—for example, [Craig and von Peter \(2014\)](#) for the German interbank market, [Beltran et al. \(2021\)](#) for the U.S. federal funds market, and [Anderson et al. \(2019\)](#) for the U.S. interbank market during the National Banking Era. We contribute to this literature by showing that the large banks in the core of the network of fronting exposures help insure the corporate sector against liquidity risks at the smaller and less liquid peripheral banks.

While this is not the first paper to study interconnectedness associated with loan syndication, the emphasis of the existing literature is very different from ours. [Harris et al. \(2020\)](#) find that a lender’s centrality in the network of past syndicate relationships increases the lender’s likelihood of serving as the lead arranger and offering more favorable loan terms to the borrowers. [Karolyi \(2015\)](#) shows that co-syndication relationships help address the moral hazard problems. [Gupta et al. \(2017\)](#) show that loan rates in syndicates with overlapping industry exposures tend to be correlated above and beyond what is predicted by fundamentals. [Cai et al. \(2018\)](#) study the indirect interconnectedness of banks arising from syndicated loans and show that banks that are more connected tend to exhibit higher levels of systemic risk. None of these papers, however, studies the question of insurance of liquidity risks in loan syndicates, nor the effects of syndicate liquidity on corporate liquidity management.

The rest of the paper is organized as follows. In [Section 2](#), we describe the mechanics of fronting exposures, and in [Section 3](#) we describe our data and construction of variables. In [Section 4](#), we present our model of liquidity capacity and the results of our stress testing exercise. In [Section 5](#), we present our empirical analysis of the role of bank liquidity in firms’ liquidity management, and, in [Section 6](#), we conclude. Details on data construction and supplementary results are collected in the Online Appendix.

2 Liquidity co-insurance in bank syndicates

A loan syndicate is a form of risk-sharing arrangement that involves several lenders who jointly provide credit to a large corporate borrower.¹ Usually, one lender, typically a bank, serves as a lead arranger and invites participation from other lenders. The lead bank often has an established long-term lending relationship with the borrower and performs the initial screening and subsequent monitoring (Ivashina, 2009). The main types of loans in syndicated credit facilities include revolving credit lines and term loans. A revolving credit line allows the borrower to borrow, repay, and borrow again up to a certain amount and under the conditions of the credit agreement. Revolving credit lines are typically retained by the banks, while term loans are often sold to nonbank lenders (Gatev and Strahan, 2009).

Credit lines remain undrawn or partially drawn for prolonged periods after origination. For many large corporations that have access to the corporate bond market or issue commercial paper, credit lines provide a liquidity backstop against credit markets disruptions. Furthermore, because credit lines are priced at fixed spread over a reference rate, they also provide insurance against spikes in the cost of external debt. Therefore, credit lines are a valuable liquidity management tool for the corporate sector.

Many syndicated credit facilities contain credit line components such as swinglines and letters of credit. A swingline allows a borrower to obtain funds faster than would otherwise be allowed by the credit agreement. The amount of funds available under the swingline is often specified as a sublimit within a revolving credit facility, and the borrower is normally required to repay the swingline loans in a short period. Swinglines are, therefore, intended to help the borrower meet immediate liquidity needs and are not meant to replace the regular revolving line of credit. To facilitate the liquidity provision on a short notice, one of the revolving lenders of the syndicate assumes the role of a swingline lender and extends the swingline loan on behalf of the whole syndicate. Although the loan is expected to be repaid in a short period, the swingline lender has the right to ask the remaining syndicate members to purchase participations in the loan according to their pro-rate shares. This exposes the swingline lender to liquidity risk, because if a syndicate member fails to honor its obligation to purchase a participation in the swingline loan, the swingline lender is left with a disproportionately higher share of the loan on its books.

A letter of credit is an agreement that guarantees payment to third parties that the borrower

¹See Bellucci and McCluskey (2017) for a comprehensive overview of the contractual characteristics of syndicated loans including the use of sublimits and the role of fronting banks.

has contractual relationships with. For example, trade or standby letters of credit are often used to guarantee payments to suppliers, whereas financial letters of credit or backup credit lines serve as a backstop for commercial paper issuance. The total amount of letters of credit the borrower can obtain is usually subject to a sublimit within the revolving credit facility. The issuer of the letter of credit, which is one of the revolving lenders, assumes the full responsibility for disbursing the funds to the third party upon presentation of the relevant documents. The remaining revolving lenders have an unconditional obligation to subsequently purchase participations in the letter of credit from the issuer. Thus, similar to a swingline, issuing a letter of credit exposes the issuing lender to the risk of a syndicate member bank becoming illiquid and unable to participate in a drawdown.

Swingline lenders and letter of credit issuers are called fronting lenders, because they front the payments to borrowers or third parties before requesting participation from the rest of the syndicate. The associated exposures are called fronting exposures. To illustrate how fronting exposures work, consider the simple example in Figure 3. In this example, a syndicate of three banks issues a credit line to a borrower, and the revolver contains a swingline sublimit of 100. Panel A shows the credit commitments and fronting exposures implied by the swingline. The fronting bank commits to advance the full 100 on demand by the borrower, and the member banks commit to purchase their participations worth 25 each. The fronting exposures of the fronting bank are thus 25 to each member bank. In panel B, we illustrate the situation where the borrower draws in full the swingline and both member banks purchase their participations in the swingline loan. The exposure of the fronting bank to the borrower is reduced to 50, the fronting bank's pro-rata share of the revolving facility, and the member banks now have a credit exposure of 25 each to the borrower. If any of the member banks fails to honor their obligation to the fronting banks, however, the fronting bank is left with a larger share of the swingline and effectively provides a loan to the member bank. This is shown in panel C, where we assume that only member bank 1 fully purchases its participation, while member bank 2 fails to do so. The fronting bank is thus left with a swingline loan of 75 to the borrower, rather than its pro-rata share of 50.

The liquidity insurance role of sublimits and fronting commitments creates value to both borrowers and banks. From the borrower's perspective, the ability to deal with only one syndicated lender and to access same-day funds on demand creates convenience that is similar to maintaining cash. From the perspective of non-fronting banks, the obligation of the fronting bank to initially disburse the full amount of the sublimit draw creates flexibility for non-fronting banks in managing

their own liquidity. The fronting bank bears the liquidity risk associated with the drawdown and effectively insures the borrower against liquidity problems at member banks. Provided that the fronting banks are sufficiently liquid, the fronting commitments thus effectively reallocate liquidity from fronting banks to illiquid member banks in times of liquidity stress. Because banks can, and typically do, serve the role of a fronting bank in some syndicates while being member banks in other syndicates, they both benefit from and provide this form of insurance. But it also means that the fronting exposures create a potentially complicated interbank network. The ability of the banking system to honor drawdowns on sublimits and regular revolvers, therefore, depends not only on the amount of available liquidity at banks, but also on the structure of this interbank network.

3 Data

We use the Refinitiv and LoanConnector (DealScan) dataset as our primary source of information on syndicate structure, credit origination, price and non-price information of credit facilities. We supplement DealScan with information from the confidential supervisory bank reports FR Y-14Q Schedule H.1, or FR Y-14 for short, to inform some of our calibrations. FR Y-14 data are collected by the Federal Reserve for the annual Dodd-Frank Act Stress Test (DFAST) and Comprehensive Capital Analysis and Review (CCAR) stress test exercise and contain detailed quarterly loan-level and borrower-level information for the corporate lending of the largest bank holding companies operating in the United States. To obtain borrower balance sheet and income information, we use S&P Compustat data along with S&P CapitalIQ available on the WRDS data platform. CapitalIQ contains detailed information on firms' capital and liability structure from the financial footnotes of SEC 10-K filings. Firms provide information on the drawn and undrawn portions of their credit lines in the sections devoted to liquidity and capital resources and in the footnotes dedicated to outstanding debt obligations. Historical stock price information used to construct market-based measures of assets, leverage, and Tobin's Q is obtained from CRSP on WRDS. We use Moody's Analytics and CreditEdge dataset to obtain information on borrowers' credit ratings and empirical default frequencies (EDFs). Finally, we rely on consolidated FR Y-9C data to construct balance sheet and income information for bank lenders.

We perform several steps to construct the final data for analysis.² We first consolidate all lenders under the same bank holding company, taking into account mergers and acquisitions that

²See Appendix A.1 for a detailed discussion on the data construction. We follow common procedures to clean and merge the data with other datasets used in the existing literature.

occur over the sample period.³ Second, information on sublimits is available in DealScan as part of the non-price terms of credit facilities, whereas information on interbank fronting exposures is only recorded in FR Y-14. Fronting exposures are reported as committed credit facilities between the fronting bank as a lender and syndicate member banks as borrowers. Unfortunately, FR Y-14 data do not contain syndicate identifiers that would allow us to reconstruct the syndicate and directly match FR Y-14 to DealScan. Furthermore, information on fronting exposures in FR Y-14 is only available at the end of 2016. Therefore, we use the relationships between sublimits and fronting exposures described in the previous section to reconstruct the implied interbank fronting commitments in DealScan.⁴

Our final dataset is an unbalanced firm-bank panel containing 5451 borrowers and 754 bank holding companies that covers the period from 2004:Q1 until 2020:Q2. There are important departures in our data construction as compared to the existing literature. First, unlike the existing literature, we do not limit our sample to nonfinancial firms. We include lending to nonbank financial firms and to utilities, because we study the overall liquidity exposures of banks to the corporate sector, and many utility companies and nonbank financial firms are large and systemic institutions that have high usage of credit lines and sublimits in their liquidity management. Second, we consolidate bank-level information to the top-holder bank holding company, which is important in our context for at least two reasons. First, the liquidity capacity of a particular bank is significantly influenced by the available liquidity in the bank holding company and the existence of an active internal market for funds. Second, capital and liquidity regulation is applied at the consolidated bank holding company.

Table 1 presents summary statistics of the combined dataset used for our analysis. Panels A.1 and A.2 document the distribution of contract characteristics for credit lines without sublimits (A.1) and for credit lines with sublimits (A.2). The average committed amount of credit lines in our sample is \$826 million and the median is \$300 million. The average credit line amount for credit facilities with sublimits is lower, at \$734 million, but the median is the same as a credit line without a sublimit. The sublimit amount is, on average, about 25 percent of the total committed amount. Credit lines with sublimits have slightly higher fees and are significantly more likely to contain a

³We use NIC data repository <https://www.ffiec.gov/NPW>, which contains historical information on the corporate structure of bank holding companies. It assigns a unique identification number (ID RSSD) to each institution affiliated with a bank holding company. We apply a matching procedure that allows us to track bank lenders over time and assign them to their respective bank holding company.

⁴In some cases, the underlying borrower is reported as the guarantor of the fronting loan. For those loans, we are able to match and verify information coming from DealScan with information in FR Y-14. Appendix A.2 provides a detailed analysis on the goodness-of-fit of this approximation and the robustness of our results.

financial covenant. On average, 23 percent of credit lines contain some form of financial covenant. In contrast, close to 90 percent of credit facilities with sublimits have at least one financial covenant.

In panel B, we show the average borrower characteristics. Because we include financial firms and utilities, our sample contains, on average, much larger and more levered borrowers than the average characteristics of publicly traded firms in related studies. The median borrower is a large corporation with total consolidated assets of about \$2.4 billion, and the average borrower is a corporation with close to \$18 billion in total assets. There is large heterogeneity in borrower asset sizes, with the interquartile range varying between \$712 million and \$10 billion. The median borrower in our sample has a debt-to-asset ratio of about 61 percent, which is also higher than the average ratios reported in other studies that use DealScan.

We summarize the liquidity management of borrowers with three measures: the cash-to-asset ratio, the liquidity-to-asset ratio, and the revolver-to-liquidity ratio. We define corporate liquidity as the sum of the total committed amounts of credit lines and the total amount of cash and cash equivalents. The average cash-to-asset ratio is about 8 percent, with large heterogeneity across firms, and the median firm has a cash-to-asset ratio of about 5 percent. The inter quartile range varies from about 2 percent to about 11 percent of total assets. The liquidity-to-asset ratio is about 20 percent for the average firm, with some notable variation among firms. For most firms in our sample, a credit line is the predominant form of liquidity management. The median firm total credit lines comprise more than 70 percent of their available liquidity.

We summarize the asset size, capitalization, liquidity positions, deposit funding, and profitability of banks in panels C.1 for lead banks and C.2 for member banks based on data from FR Y-9C and the Call Reports. Most of the large banks in our sample are both lead and member banks in different syndicates and are part of the densely connected core. Smaller banks are mostly non-fronting and non-lead banks. As a measure of liquidity we use a measure of the HQLAs defined in the LCR requirement under Basel III. We define insured deposits as all deposits with balances within the relevant deposit insurance limit for the period. STWF is composed of all non-deposit short-term liabilities such as borrowing from the federal funds market and borrowed amounts under repurchase agreements as well as all uninsured deposits and debt with outstanding maturities of less than one year.

4 Measuring liquidity capacity

4.1 Model

We consider a banking system composed of N banks endowed with stylized balance sheets shown in Figure 1. The banks are funded with equity (E), insured deposits (D), and uninsured debt (B). They invest in liquid assets L , which we also label as HQLAs to match the definition of the LCR requirement, as well as risky and illiquid loans and securities Z . The off-balance-sheet positions consist of undrawn lines of credit—both syndicated and direct—to nonbanks (U) and fronting exposures and participation commitments (F^{out} , F^{in}) arising from syndicated lines of credit.

Assets	Liabilities
HQLA (L)	Equity E
Illiquid loans (Z)	Deposits D
	Uninsured debt B
Undrawn revolvers U	
Fronting exposures F^{out}	Participation commitments F^{in}

Figure 1: Bank balance sheet.

We assume that there are K borrowers, indexed by k , and each borrower has one syndicated credit facility, so that k also indexes credit facilities or syndicates. A syndicate providing a credit facility to a borrower is a subset of banks. The syndicate provides a credit line with a committed amount u_k , and the facility is composed of a regular credit line, u_k^r , and a sublimit, u_k^s , i.e., $u_k = u_k^r + u_k^s$. Each bank i in the syndicate has a pro-rata share of the facility equal to $\gamma_{i,k} \in (0, 1)$.

The total undrawn credit line commitments of bank i are the sum of the undrawn credit lines in which the bank serves as the fronting bank and the undrawn credit lines in which the bank is a member bank. When the bank serves as the fronting bank in syndicate k , it commits to providing to the borrower its pro-rata share ($\gamma_{i,k}$) of the regular revolver (u_k^r) and the full sublimit (u_k^s). When the bank is a member in the syndicate, it commits to providing its pro-rata share of the regular revolver to the borrower, and it is obliged to purchase a participation in the submit loan from the fronting bank according to its pro-rata share. Thus, summing across all syndicates, the total undrawn credit line commitments of bank i are given by

$$U_i = \sum_{k \in K_f(i)} (\gamma_{i,k} u_k^r + u_k^s) + \sum_{k \in K_m(i)} \gamma_{i,k} u_k^r, \quad (1)$$

where $K_f(i)$ denotes the set of syndicates in which bank i serves as the fronting banks and $K_m(i)$ is the set of syndicates in which the bank is a member. Similarly, the total fronting exposures of bank i are given by the sum of the fronting exposures across syndicates in which i is a fronting bank, $F_i^{out} = \sum_{k \in K_f(i)} (1 - \gamma_{i,k}) u_k^s$. The total participation commitments are the sum of all participation commitments in syndicates where i is a member bank, $F_i^{in} = \sum_{k \in K_m(i)} \gamma_{i,k} u_k^s$. The interbank network of fronting exposures $F := \{f_{i,j}\}$ is given by $f_{i,j} = \sum_{k \in K_f(i)} \gamma_{j,k} u_k^s$. Thus, F_i^{out} is the sum of the i -th row and F_i^{in} is the sum of the i column of F . We will interchangeably refer to fronting exposures as "fronting-out" and participation commitments as "fronting-in."

To model drawdowns on the credit lines, we assume a drawdown rate of α_k^r on regular revolvers and α_k^s on sublimits. The demand for bank i 's liquidity by firm k is given by

$$\bar{d}_{i,k}(\alpha_k) = \begin{cases} \alpha_k^r \gamma_{i,k} u_k^r + \alpha_k^s u_k^s, & \text{if } i \text{ fronting bank, } k \in K_f(i) \\ \alpha_k^r \gamma_{i,k} u_k^r, & \text{if } i \text{ is member bank, } k \in K_m(i) . \end{cases} \quad (2)$$

If bank i is the fronting bank in the syndicate lending to k , it assumes in full the drawdown amount on the sublimit. If the bank is a member bank, it is only directly responsible for its share in the drawdown of the regular revolver. Summing across all syndicates (borrowers) in which bank i is either a fronting bank or a member bank, the total request for funds that bank i faces is

$$\bar{d}_i(\alpha) = \sum_{k \in K_f(i)} (\alpha_k^r \gamma_{i,k} u_k^r + \alpha_k^s u_k^s) + \sum_{k \in K_m(i)} \alpha_k^r \gamma_{i,k} u_k^r, \text{ for } i = 1 \dots N. \quad (3)$$

However, the member banks also have an obligation to purchase participations in the sublimit loans from the fronting bank. Summing across syndicates, the total participation obligation arising from draws on sublimits that bank j has to bank i reads

$$\bar{f}_{i,j}(\alpha) = \sum_{k \in K_m(i)} \alpha_k \gamma_{j,k} u_k^s, \text{ for } j = 1 \dots N. \quad (4)$$

In addition to the drawdowns on credit lines, we subject the bank to an additional liquidity shock: a shock to banks' STWF. We model the funding shock as an outflow of STWF equal to a fraction $\lambda_B \in [0, 1]$ of the outstanding stock of such short-term debt, B_i .⁵ Figure 2 summarizes the state of the bank balance sheet in our model immediately after the liquidity shocks. The drawdowns

⁵Most of banks' secured and unsecured short-term debt is held by entities outside the banking system such as money market mutual funds. To simplify our analysis, we do not model interconnectedness among banks arising from such funding.

on credit lines become on-balance-sheet loans leading to a transformation of liquid assets to illiquid loans. The drawdowns on sublimits create on-balance sheet interbank assets related to fronting exposures and liabilities related to the participation commitments. The funding shock further drains liquidity in proportion to the outstanding uninsured debt.

Assets	Liabilities
HQLA $(L_i - \lambda_B B_i - \bar{p}_i(\alpha))$	Equity E_i
Illiquid loans (Z_i)	Deposits D_i
Drawdowns $\bar{d}_i(\alpha)$	Uninsured debt $(1 - \lambda_B)B_i$
$\sum_j \bar{f}_{i,j}(\alpha)$	$\sum_j \bar{f}_{j,i}(\alpha)$
Undrawn revolvers $U_i - d_i(\alpha)$	
Fronting exposures $\sum_j (f_{i,j} - \bar{f}_{i,j}(\alpha))$	Participation commitments $\sum_j (f_{j,i} - \bar{f}_{j,i}(\alpha))$

Figure 2: Bank balance sheet after liquidity shock.

We can summarize all post-shock liquidity flows in the model in a payment matrix

$$P(\alpha) = \begin{pmatrix} \bar{\mathbf{F}}(\alpha) & \bar{\mathbf{D}}(\alpha) \\ \mathbf{0} & \mathbf{0} \end{pmatrix}, \quad (5)$$

where $\bar{\mathbf{F}}(\alpha) = [\bar{f}_{i,j}(\alpha)]_{i,j}$ is a $(N \times N)$ matrix of interbank fronting obligations and $\bar{\mathbf{D}}(\alpha) = [\bar{d}_{i,k}(\alpha)]_{i,k}$ is the $(N \times K)$ matrix of credit line drawdowns. Because we assume that firms do not make payments to banks or one another during the stress scenario, the lower rows of the payment matrix are zero matrices. Banks face a total demand for funds equal to the sum of regular revolver drawdowns and fronting obligations

$$\bar{p}_i(\alpha) = \sum_j \bar{f}_{j,i}(\alpha) + \sum_k \bar{d}_{i,k}(\alpha), \text{ for } i = 1, \dots, N. \quad (6)$$

We assume that banks prioritize the repayment of uninsured funding before other liabilities. Such priority of payments is justified by the fact that a failure to honor a credit line draw would not trigger insolvency, even if it may have reputation and legal costs for breach of contract. The equilibrium payment that bank i makes must satisfy a resource constraint

$$p_i(\alpha) \leq L_i - \lambda_B B_i + \sum_j \bar{f}_{i,j}(\alpha), \text{ for } i = 1, \dots, N, \quad (7)$$

where L_i denotes the available liquidity and $\lambda_B B_i$ is the outflow of short-term funding. The withdrawals of short-term funding are repaid first, and the remaining liquidity, if any, is used for

honoring draws by the corporate sector. Thus, banks with more stable funding in the form of equity and insured deposits are in a better liquidity position to honor credit line drawdowns than banks that rely more on uninsured funding.

To solve for the equilibrium payment vector, define the relative payment matrix A that contains the obligations of bank j to bank i as a fraction of the total obligations of i as $a_{i,j} = \frac{p_{i,j}(\alpha)}{\bar{p}_i(\alpha)}$. Following [Eisenberg and Noe \(2001\)](#), we can then define the equilibrium payment vector as the solution of the following system of equations

$$p_i(\alpha)^* = \bar{p}_i(\alpha) \wedge \left(L_i - \lambda_B B_i + \sum_j a_{j,i} p_j(\alpha)^* \right)_+, \text{ for } i = 1, \dots, N. \quad (8)$$

The equilibrium payment vector satisfies the following three assumptions.⁶ First, all else being equal, a bank with enough liquidity after meeting its uninsured debt withdrawals would honor all drawdowns on credit lines and fronting obligations in full. Second, a bank's total payouts to the corporate sector cannot exceed a bank's available liquidity after debt payments. This means that banks prefer to default on their credit line obligations rather than fire-sale their less liquid assets. Third, if a bank does not have sufficient resources to honor all credit line drawdowns and fronting obligations, it rations its available liquidity across all obligations in proportion to their relative shares captured by the matrix A . We also implicitly assume that banks prefer not to use other forms of liquidity backstops such as the discount window or access interbank markets to obtain additional liquidity. We solve for $p(\alpha)^*$ using the fictitious default algorithm introduced by [Eisenberg and Noe \(2001\)](#).⁷

4.2 Measures of liquidity capacity and insurance

We define several measures of the liquidity capacity of the network and the economic value of the insurance provided by fronting commitments. We first define the set of banks that run out of liquidity and default on their obligations to service credit lines to the corporate sector and participation commitments to fronting banks. Second, we define bank liquidity shortfall as the difference between the demanded liquidity and the actual feasible payment $p_i(\alpha) - p_i^*(\alpha)$; for liquid banks, this is simply equal to zero. Summing across all banks results in the system-wide, or *overall*

⁶The operator \wedge is the point-wise minimum of any two vectors $x \wedge y = (\min(x_1, y_1), \min(x_2, y_2), \dots, \min(x_N, y_N))$ and $(x)^+$ operator is the point-wise non-negative components of a vector $(x)^+ = (\max(0, x_1), \max(0, x_2), \dots, \max(0, x_N))$.

⁷It is easy to verify that the conditions for existence and uniqueness of the resulting payment vector derived in [Eisenberg and Noe \(2001\)](#) are also satisfied in this setting.

shortfall of liquidity: $\sum_{i \in N} \bar{p}_i(\alpha) - p_i^*(\alpha)$. Correspondingly, we define the *sublimit shortfall* as the difference between the requested liquidity via sublimits and the actual feasible sublimit payments, both at the bank level as well as overall.

To measure the insurance value of the fronting commitments, or, equivalently, the effective reallocation of liquidity from fronting banks to illiquid member banks, we calculate the amount of liquidity that fronting banks provide above and beyond their pro-rata share of the sublimits in the stress scenario. If all fronting banks were sufficiently liquid to honor all drawdowns in full, *net fronting* equals the difference between the requested participations, $\bar{f}_i(\alpha)$, and the feasible participations, $f_i^*(\alpha)$, summed across banks: $\sum_{i \in N} \bar{f}_i(\alpha) - f_i^*(\alpha)$. This quantity defines the maximum possible effective liquidity reallocation. However, if some fronting banks are not fully liquid, the actual, feasible net fronting and the associated effective reallocation of liquidity from fronting banks to member banks is smaller, reflecting the liquidity shortfall at fronting banks.

We can illustrate the effective liquidity reallocation using our simple example in Figure 3. In panel C, we examine the case of one illiquid member bank that has a participation commitment of \$25 to fund the \$100 drawdown of the borrower but no liquid assets to honor this commitment. If the fronting bank's liquid assets are at least \$75, then there is no liquidity shortfall from the perspective of the firm as the fronting bank absorbs the \$25 participation commitment of the illiquid member bank 2. In this case, net fronting and the effective liquidity reallocation from the fronting bank to the illiquid member bank equals \$25. If, however, the fronting bank is not fully liquid and has only, say, \$55 in available liquidity, the fronting bank can only cover \$5 of the member bank's participation commitment. As a result, the sublimit shortfall is \$20 and net fronting only equals \$5.

Finally, we define the *maximum feasible drawdown rate* at the bank level, which is given by the highest drawdown rate at which a bank exhausts its available liquidity and is no longer able to fulfill its obligations in full. In our model, it is obtained by finding the drawdown rate u^* such that $u^* = \max_u \{p_i^*(u) \leq \bar{p}_i(u)\}$. The drawdown feasibility at a bank thus takes into account the fact that all other banks are also experiencing the same rate of drawdown on their credit lines and the same short-term funding outflows. To illustrate using the simple example in Figure 3, suppose that the liquidity position of the fronting bank is at least \$75, member bank 1 has liquid assets of at least \$25, and member bank 2 has zero liquidity. Then the maximum feasible drawdown rate is 100%, 100%, and 0%, respectively. Suppose now that the liquid assets of the fronting bank drop to \$55, leaving the liquid assets of the member banks unchanged. Then the drawdown feasibility

for the fronting bank drops to 80% because if the firm draws more than 80% of the sublimit, the fronting bank will no longer be able to cover the shortfall at member bank 2 in full.

4.3 Calibration

4.3.1 The network of interbank exposures

We begin the calibration of the model by characterizing the network of fronting exposures $F := \{f_{i,j}\}$. Panel A of Figure 5 plots the network as of the end of 2006 and at the end of 2019. Four stylized facts about the structure of the network and the direction of exposures are worth highlighting. First, the network has a well-defined core-periphery structure throughout our sample period. We define the core as the largest set of banks that have both fronting exposures and participation commitments to all other banks in the core—that is, the largest fully connected component. There are 14 banks in the core in 2006 and 12 in 2019, shown in the center. The remaining banks form the periphery and are positioned in concentric circles around the core. The closer a periphery bank is to the core, the more fronting-based connections it has with banks in the core. Second, 98 percent of the total fronting exposures are provided by banks in the core. Of those, 64 percent are fronting exposures among banks in the core, and 34 percent are fronting exposures provided by banks in the core to banks in the periphery. Third, fronting exposures are concentrated in four banks in the core, indicated in red. These banks have net positive fronting exposures to other banks, that is, their fronting exposures exceed their participation commitments. All other banks in the network have higher participation commitments than fronting exposures.

Finally, the core-periphery structure of the interbank network and the effective liquidity reallocation through fronting commitments are relatively stable over our sample period. Panel B shows that the number of banks in the core and the number of net fronting banks are relatively stable over our sample period. The number of banks in the core varies between 9 and 15, whereas the number of net fronting banks varies between 3 and 5 banks. Panel C shows that the relative composition of fronting exposures among core banks and from core banks to periphery banks also remains relatively stable. As a result of the relative stability of the core-periphery structure of the network, the main variation in the liquidity capacity of the network is determined by the distribution of liquidity across banks in the core and periphery.

4.3.2 Bank liquidity positions and funding

The primary driver of changes in banks' liquidity positions in the post-GFC period was the introduction of the LCR requirement in 2014 and its full implementation in January 2017. The largest banks subject to the more stringent standard LCR requirement accumulated significant amounts of HQLAs.⁸ As shown in Figure 6, the HQLA-to-assets ratios of those banks more than doubles relative to their 2006 levels. Similarly, banks subject to the less stringent modified LCR rules increased their liquidity but by less than the standard LCR group. In contrast, smaller banks, not subject to the LCR, after initial accumulation of liquidity during and following the GFC, gradually reduced their liquidity to pre-2007 levels.

The largest banks were also subjected to significantly tighter regulatory capital requirements in the post-GFC period, including stress testing and capital surcharges for the largest banks, referred to as global systemically important banks (GSIBs), which are tied to those banks' systemic footprint. As a result, the regulatory capital defined as common equity Tier 1 (CET1) capital, which we use as a proxy for E_i , also increased substantially for the largest banks as shown in the top-right panel of Figure 6. Unlike HQLA positions, which significantly diverged across the bank size distribution, regulatory capital ratios converged to similar average levels across the different size categories in the post-GFC period.

Banks also reduced their reliance on unstable STWF (B_i) as a result of capital and liquidity regulation in the post-GFC period. The use of STWF declined in half from about 40 percent of total assets for the largest banks to about 20 percent at the end of our sample. STWF was replaced with more stable sources of funding such as insured deposits and equity capital. Despite those reductions, the largest banks continued to be funded with significantly less stable sources of funding as compared to smaller banks.

⁸At its introduction, the LCR requirement defined three categories of banks based on total assets. Standard LCR banks are bank holding companies with total consolidated assets exceeding \$250 billion and those include the eight U.S. GSIBs. The less stringent modified LCR is applied to banks with total consolidated assets between \$50 billion and \$250 billion. Bank holding companies with assets below \$50 billion are not subject to the LCR. On January 1, 2020, the standard LCR requirement was reduced to 0.85 for bank holding companies with total consolidated assets between \$250 billion and \$700 billion if those banks' STWF does not exceed \$75 billion. Bank holding companies with consolidated assets below \$250 billion were exempt from the LCR if their STWF was below \$50 billion; otherwise, they were subject to a reduced LCR of 70 percent. All banks with total consolidated assets below \$100 billion were exempt from the LCR.

4.4 Liquidity stress scenarios

We use three scenarios with uniform drawdown rates of 10 percent, 15 percent, and 50 percent, respectively, and three scenarios that allow for industry-specific drawdown rates calibrated to the data. The data-based liquidity stress scenarios are summarized in Table 2. In the first scenario shown in column (2), we use observed utilization rates derived from CapitalIQ data and we estimate drawdown rates as changes in those utilization rates. Panel A of Figure 7 shows the time-series of the aggregate utilization rates based over our sample period. The implied aggregate drawdown rate peaked at about 8.8 percent of the undrawn portion of the committed credit line amounts during the GFC period. There is some notable heterogeneity across industries. For example, firms in mining, oil, and gas drew more than 24 percent of their unused credit lines, whereas companies in the agriculture sector reduced, on balance, their utilization of credit lines.

Our second and third scenarios employ drawdown rates derived from quarterly FR Y-14 data. The drawdown rates in the second scenario (COVID-19) are reported in column (4) and computed based on the net drawdown rate in 2020:Q1 as a percent of the undrawn amount as of 2019:Q4. The aggregate net drawdown rate was about 15.6 percent points. Panel B of Figure 7 shows the time-series of net drawdown rates based on FR Y-14 over our sample period. After the large net drawdowns on credit lines in 2020:Q1, most corporates repaid drawdowns in 2020:Q2 following massive monetary and fiscal stimulus that stabilized funding markets and reduced aggregate uncertainty. Similar to the drawdown rates during the GFC, there was significant heterogeneity in the use of credit lines that mostly reflects different exposures to the pandemic shock. Sectors particularly impacted by the pandemic such as the arts, entertainment, lodging, and food services experienced the highest drawdown rates.

Figure 7 also reveals that outside stress periods, the drawdowns of credit lines are normally idiosyncratic and roughly balanced with repayments of previously drawn credit lines. The amount that is drawn by one set of firms roughly matches the amount that is repaid by another set of firms and, as a result, the net drawdown rates are close to zero. Therefore, exposures to the corporate sector liquidity demands in normal times are sufficiently diversified to cause any significant liquidity pressures on banks.

The drawdown rates in the third scenario (EAD) are based on the expected exposures at default (EADs) reported in column (5). The EAD measures the expected utilization of credit lines in the event of distress of borrowers. The EADs are self-reported by banks in the FR Y-14 data and take into account contractual characteristics of credit lines such as covenants that would prohibit a

borrower from fully utilizing their credit line in distress. Based on the EADs, the average expected drawdown rate in distress is about 54 percent of the undrawn committed amount. Although the EAD-based drawdown rate appears to be substantial by historical standards, we view this measure as the upper bound on contractually feasible drawdown rates of credit lines. For example, the aggregate drawdown rate of credit lines by firms in the arts, lodging, and food services in 2020:Q1 was about 48 percent of the undrawn committed amount, which is very close to the expected EAD drawdown rate of about 53 percent as of 2019:Q4.

Finally, we calibrate the STWF shock (λ) based on the outflows during the GFC, which are illustrated in Figure 6. We set the STWF shock to a 10 percentage point drop in STWF as a share of total assets, which roughly corresponds to the drop observed during the GFC.

4.5 Results

4.5.1 Evolution of liquidity capacity

We compare banks' liquidity capacity in two distinct time periods in our sample. The goal is to quantify how banks' liquidity capacity has changed since the GFC and the introduction of liquidity regulation. The pre-GFC period examines banks' capacities at the end of 2006, and the post-GFC period examines banks' capacities at the end of 2019, which is two years after the full phase-in of the liquidity regulation and less than three months before the COVID-19 pandemic shock.

The first three rows of Table 3 report the total drawdowns under the different scenarios in dollar terms as well as relative to aggregate HQLA or HQLA less the STWF outflow under stress. We see that despite a significant increase in the dollar amounts of hypothetical drawdowns in 2019 under all scenarios, those drawdowns relative to available liquidity are much smaller relative to 2006, reflecting the significant increase in HQLA holdings and lower reliance on wholesale funding at large banks post-GFC. For example, under the high-drawdown scenarios of 50 percent and EAD, the available system-wide liquidity would be insufficient to cover the drawdowns in 2006, even without the funding shock. In contrast, in 2019, aggregate liquidity exceeds the total drawdowns in all scenarios including those with outflows of short-term wholesale funding.

Panels A and B examine whether the banking system has the capacity to honor the drawdowns in full with and without the STWF shock, respectively. This capacity depends on the distribution of liquidity across banks and on the ability of interbank fronting commitments to effectively reallocate liquidity from banks with excess liquidity to banks with shortfalls. Panel A reports the overall liquidity shortfalls without the short-term funding shock. Starting with the 2006 stress test, the

overall shortfall ranges from \$12 billion in the 10 percent scenario to \$386 billion in the EAD scenario, or 6 percent and 40 percent of the initial drawdown, respectively. Relatively few banks, 11 and 14, experience liquidity shortfalls in the moderate 10 percent and 15 percent scenarios, respectively. However, the number of banks with liquidity shortfalls exceeds 40 banks in the 50 percent and the EAD scenario scenarios. Out of these banks, 8 are LCR banks, 13 are in the core of the fronting network, and 3 are net fronting banks.

In contrast to the overall shortfalls, the shortfalls on sublimits are significantly smaller as percent of the requested amounts. For example, under both the 10 percent (GFC) and 15 percent (COVID) scenarios, shortfalls on sublimits are about 1 percent of the requested amount compared to 6 percent and 9 percent respectively for the overall shortfall. This large difference in shortfalls reflects the role of fronting commitments as a mechanism of reallocating liquidity among banks. Under the modest drawdown scenarios, few net fronting banks experience liquidity shortfalls and that allows for those banks to insure borrowers against illiquidity of other syndicate banks. To gauge the insurance function of the fronting commitments, we calculate the amount of liquidity that is effectively reallocated from fronting banks to member banks experiencing liquidity shortages, or net fronting, as explained in Section 4.2. The net fronting is \$1 billion to \$3 billion for the moderate scenarios, but it reaches \$25 billion, or 20 percent of the drawdown on sublimits in the 50 percent and the EAD scenario.⁹

Turning to the results for the 2019 stress test, we find similar overall shortfalls as in 2006 when expressed as a fraction of total drawdowns. However, the number of banks in the core as well as those subject to the liquidity regulation that experience liquidity shortfalls is smaller in all scenarios. Only one core bank experiences liquidity distress in the 50 percent and EAD scenarios, and no net fronting bank experiences liquidity distress even in the EAD scenario. Even though sublimit shortfalls are slightly larger as compared to 2006 in the moderate drawdown scenarios, they are significantly lower under the large drawdowns scenarios of 50 percent and EAD. This reflects the significantly higher liquidity in core and net fronting banks in 2019 as compared to their balance sheet liquidity in 2006.

In panel B, we introduce the 10 percent short-term funding shock. The results reveal several

⁹It is worth noting here that the small net fronting amounts under moderate drawdown rates are consistent with the low outstanding amounts of fronting recorded in FR Y14 data (see Figure 4). The outstanding amount of fronting is very low throughout the available data in FR Y14 and averages about \$2 billion and increases only slightly at the onset of the COVID-19 pandemic. However, banks expect that, in severe distress captured by the reported exposures at default (EAD), the outstanding amount of fronting could exceed 40 percent of the committed amount. The online appendix provides further details on the data construction and comparisons between DealScan and Y14 data.

important changes in the liquidity capacity and coinsurance function of the interbank network. First, the funding shock has a much bigger impact on the overall liquidity shortfalls and the number of distressed banks in 2006 as compared to 2019. Second, the liquidity capacity is much higher in 2019 relative to 2006, or equivalently, the overall liquidity shortfalls and the number of illiquid banks, especially in the core of the network, are much smaller. Starting with 2006, in the severe 50 percent and EAD scenarios, the overall liquidity shortfall exceeds 70 percent of the drawdown amount, almost double the corresponding shortfall without the STWF shock (Panel A). The number of banks with liquidity shortfalls exceeds 60, compared to 43 banks that experience shortfalls in the severe scenario without the shock (Panel A). Furthermore, all core banks and all net fronting banks become illiquid. In contrast, in 2019, the increases in the shortfalls due to the STWF shock are significantly smaller. In the severe scenarios (50% or EAD), the overall shortfall increases only by 2 percentage points. Although the number of banks in distress increases relative to the scenario without the shock (Panel A), no net fronting bank experiences liquidity shortage, and only one LCR bank does. Clearly, the reduced reliance on unstable short-term funding post-GFC makes the banking system more resilient and expands banks' liquidity capacity relative to the pre-GFC period. In particular, the overall liquidity shortfall declines from around 75% in 2006 to around 35% in 2019.

Examining the shortfalls on sublimits, the illiquidity of the core and net fronting banks in 2006 results in significantly higher sublimit shortfalls. Rather than absorbing liquidity shocks, the core and net fronting banks are themselves illiquid and unable to honor a significant part of their fronting commitments to the corporate sector. In fact, in the severe scenarios with the STWF shock, the sublimit shortfalls are slightly higher than the overall shortfalls. In contrast, in 2019, the significantly more liquid core and net fronting banks provide liquidity insurance to the corporate sector and absorb some of the remaining illiquidity at other banks. As a result, the sublimit shortfalls as percent of drawdowns are significantly lower than the overall shortfalls on credit line drawdowns in 2019 and they are also much smaller than the corresponding sublimit shortfalls in 2006.

To shed more light on the liquidity capacity in the cross-section of banks, we examine the drawdown feasibility, which we defined as the maximum drawdown rate that a bank can sustain before running out of liquidity. Recall that the drawdown feasibility at a bank takes into account the fact that all other banks are also experiencing the same rate of drawdowns on their credit lines and the same short-term funding outflows (Section 4.2). Figure 8 summarizes the cross-section of

drawdown feasibility over time. Consistent with our findings above, the figure shows a significant increase in the liquidity capacity of the core banks and net fronting banks since the end of the GFC. While at the peak of the GFC these banks could barely withstand a 10 percent system-wide drawdown rate, in 2019 the net fronting banks are able to accommodate close to 85 percent drawdown rate and the core banks can absorb a 75 percent drawdown rate, on average. While the liquidity capacity of most other banks improves as well, the improvements are significantly less pronounced. The inter quartile range of drawdown feasibility increases in the post-GFC period and lies between 15 percent and 45 percent. More than a quarter of mostly smaller banks in our sample would not be able to sustain drawdown rates of 20 percent or more.

To summarize, the liquidity capacity of core banks has expanded significantly following the GFC due to both increased balance sheet liquidity and reduced reliance on short-term funding. Fewer large banks experience liquidity distress and the core of the fronting network is more resilient. However, the effective liquidity reallocation due to fronting commitments is not sufficient to compensate for the significantly lower drawdown feasibility at smaller banks.

4.5.2 Effective liquidity reallocation through the interbank fronting network

We next examine how much liquidity is effectively reallocated among banks through net fronting in different drawdown scenarios and across our two reference periods. Recall that the amount of liquidity reallocation through net fronting equals the total amount of liquidity provided by fronting banks above their pro-rata shares because of illiquidity at other banks in the network. This extra liquidity covers liquidity shortfalls at member banks and effectively insures the corporate sector against liquidity distress at these banks. Because our focus in this section is on the maximum possible effective liquidity reallocation through net fronting, we modify the stress test scenarios and assume that the corporate sector fully draws on their sublimits and, additionally, draws an increasing fraction of their remaining available revolvers up to a full 100 percent drawdown rate. As before, we examine scenarios with and without outflows of STWF.

Panel A of Figure 9 shows the magnitude of net fronting expressed in percent of the feasible sublimit payments to the corporate sector (solid lines) along with the sublimit shortfalls as percent of sublimit drawdowns (dashed lines). Comparing the two periods, we first note that net fronting supports a significantly larger fraction of sublimit payments in 2006 as compared to 2019, and especially so under the STWF outflow scenario. However, the liquidity shortfalls on sublimit drawdowns are significantly larger in 2006. Under a 10 percent outflow of STWF, only 40 percent

of sublimits can be feasibly disbursed to the corporate sector and of those 20 percent are supported by net fronting. Any additional drawdowns on regular revolvers further increases shortfalls on sublimits, which gradually increase to more than 80 percent. In contrast, in 2019, the significantly higher liquidity of the core and net fronting banks leads to notably lower shortfalls even under the 10 percent STWF outflow. Furthermore, increasing the drawdown rates on regular revolvers does not significantly increase the sublimit shortfalls. The overall economic significance of net fronting increases with higher drawdown rates and in the most severe scenario, fronting exposures support as much as 25 percent of sublimit payments.

Panel B decomposes the amount of effective liquidity reallocation through net fronting into that occurring among banks in the core (core-to-core) and that occurring between banks in the core and banks in the periphery (core-to-periphery). In 2006, close to 80 percent of the effective liquidity reallocation occurs among banks in the core. In contrast, in 2019, most liquidity effectively flows from fronting banks in the core to member banks in the periphery. The reason behind the differences between the two periods can be explained by examining panel C, which plots the number of core banks with liquidity shortages. In 2006, banks in the core were much more fragile than in 2019, and 3 out of the 14 banks in the core at the time were not able to honor the full drawdowns on sublimits even without outflows of STWF or drawdowns on regular revolvers. Ten out of the 14 banks in the core experience liquidity shortages under STWF outflow scenario, and all core banks become illiquid for drawdowns on regular revolvers above 20 percent. In contrast, in 2019, none of the 12 banks in the core at that time runs out of liquidity when all sublimits are drawn, and all banks in the core remain liquid for drawdown rates of up to 16 percent of regular revolvers. As a result, liquidity is primarily reallocated from the liquid core to the less liquid peripheral banks.

In sum, the effective reallocation of liquidity through net fronting shifted from reallocation among banks in the core in the pre-GCF period to reallocation from the core to the periphery in the post-GCF period. The significant liquidity at core banks in the post-GCF period ensures that even full drawdowns on sublimits could be paid with limited liquidity shortfalls. Thus, the value to the corporate sector of the liquidity insurance via fronting has significantly increased post-GFC.

4.5.3 Liquidity and capital requirements

In this section, we examine the extent to which the post-GFC liquidity and capital regulation constrain banks' ability to serve as liquidity providers to the corporate sector. The LCR requirement is designed to ensure that banking organizations have enough liquidity in the form of unencumbered

HQLA to withstand a 30-day period of liquidity stress.¹⁰ The LCR requirement is formulated as a ratio of HQLA to net cash outflows during the 30-day stress scenario. We can express the requirement using our stylized bank balance sheet as follows

$$LCR_i \equiv \frac{L_i}{\underbrace{\phi_D D_i + \phi_B B_i + \phi_U U_i}_{\text{Outflow}} - \min\{\text{Inflow}, 0.75 \times \text{Outflow}\}} \geq 1. \quad (9)$$

The numerator of the LCR ratio is the amount of HQLAs (L_i). The denominator of the LCR ratio is the net outflow of liquidity defined as a linear combination of balance sheet and off-balance-sheet positions and the respective outflow rates. The LCR assumes different outflow rates across insured deposits ϕ_D , uninsured debt ϕ_B , and the unused credit line commitments ϕ_U . The outflows are netted out with potential inflows of liquidity, which is capped at 75 percent of the outflow.

The outflow assumptions for undrawn credit lines are summarized in panel A of Table 4. The LCR distinguishes between two types of credit lines. The first, called *credit facilities*, form the bulk of credit lines. The second, called *liquidity facilities*, are credit lines that serve the purpose of backing the issuance of commercial paper or other corporate debt that are part of sublimits. Because such credit lines are more likely to be drawn in periods when credit markets are in turmoil, they are assigned a higher outflow rate.¹¹ Undrawn credit facilities to nonfinancial firms receive a 10 percent outflow assumption, whereas undrawn liquidity facilities receive a 30 percent outflow rate. The LCR treats differently credit lines provided to nonfinancial firms and those provided to nonbank financial firms. In particular, credit lines to nonbank financial institutions receive outflow rate assumptions that are about three times higher than those for nonfinancial firms. In particular, credit facilities have a 40 percent outflow rate, and liquidity facilities have a 100 percent outflow rate.

In panel A of Table 5, we report the pre- and post-stress LCR ratios for all LCR banks and separately for the eight U.S. GSIBs using 2019 data. All banks start with sizable liquidity buffers relative to their net outflow exposures as shown in the first column of panel A (zero drawdown). The average bank has an LCR ratio of 1.23 and the largest banks—the U.S. GSIBs—have an average ratio

¹⁰Basel III introduced two frameworks of liquidity regulation—the LCR and the net stable funding ratio (NSFR) requirement. The NSFR targets longer-term sustainability of a bank’s funding sources. It aims to ensure that banking organizations have enough stable funding sources to meet liquidity and funding demands over a 12-month horizon. Although the conceptual framework of the NSFR was finalized in 2010 with the Basel III proposal and in 2016 in the U.S. with the issuance of a proposed rule making, as of the end of 2018, the NSFR has not been implemented. Therefore, we focus our analysis entirely on the LCR.

¹¹Our data do not allow us to precisely classify credit lines with respect to their treatment under the LCR. However, in our simulations, we use approximations based on the credit facility purpose reported in FR Y-14.

of 1.20. LCR positions of banks vary substantially from the lowest ratio of 1.06 to the maximum of 1.75. In columns (2) through (6) we increase the drawdown rate and calculate the post-stress LCR. In column (2), we show a scenario of a uniform 10 percent drawdown rate, which is close to the average drawdown rate during the GFC (Table 2, column (2)). Six LCR banks breach their regulatory minima and the average LCR ratio drops below 1; none of the large U.S. GSIBs violates its regulatory minima at this level of drawdowns. However, as we increase the magnitude of drawdowns, liquidity is quickly consumed even at the largest and most liquid banks. At the 25 percent drawdown rate, four of the eight GSIBs breach their LCR requirements, and their average LCR equals 0.99. The average LCR drops to 0.79 for all LCR banks. At the drawdown rate of 50%, which roughly corresponds to the average rate in the EAD scenario (Table 2, column (5)), all but one G-SIB breach their LCR minimum, and the average LCR equals 0.77. For the average LCR bank, the LCR equals 0.55. At this drawdown rate, many LCR banks breach their LCR requirements, and some LCR banks run out of liquidity completely. At the full drawdown rate, all LCR banks, including the GSIBs, breach their LCR requirements.

The results of this analysis show that the LCR would be a binding constraint even at modest drawdown rates and would significantly restrict banks' capacity to provide liquidity to the corporate sector in stress periods. Although current regulation does not have an explicitly established countercyclical policy for relaxation of the LCR similar to the countercyclical capital buffer, it does leave some discretion to the supervisors in choosing the penalties for violating the LCR.¹² This discretion of the regulator to relax liquidity requirements was used during the COVID-19 pandemic, when banks were encouraged to use their available liquidity to support lending.¹³

We next examine how the credit line drawdowns affect risk-based regulatory capital. The risk-based capital requirement of bank i is defined as the ratio of regulatory capital (CET1) to the total amount of risk-weighted assets

$$\rho_i(\alpha) \equiv \frac{E_i}{\kappa_Z Z_i + \kappa_U U_i + (\kappa_Z - \kappa_U) d_i(\alpha)}. \quad (10)$$

Risk-weighted assets are the linear combination of risky on-balance sheet loans, which normally

¹²See Federal Reserve's press release on September 8, 2016 for details on the countercyclical capital buffer framework <https://www.federalreserve.gov/newsevents/pressreleases/bcreg20160908b.htm>

¹³Very early at the onset of the COVID-19 pandemic and before the creating a number of credit and liquidity facilities, the Federal Reserve issued a number of statements that encouraged banks to use all their available capital and liquidity to support credit to the economy "The Federal Reserve is encouraging banks to use their capital and liquidity buffers as they lend to households and businesses who are affected by the coronavirus." (See March 15, 2020 press release <https://www.federalreserve.gov/newsevents/pressreleases/monetary20200315b.htm>)

receive a $\kappa_Z = 100$ percent risk-weight, and undrawn lines of credit, which normally receive a $\kappa_U = 50$ percent risk-weights. Therefore, a drawdown on a credit line increases risk-weighted assets by one half of the amount drawn. The bulk of the credit lines in our data are not cancellable and have maturities that exceed one year, which, according to Table (4), receive 50 percent outflow on-balance sheet conversion factor. Panel B of Table 5 reports the effect of credit line drawdowns on capital ratios. We find that under all scenarios, all banks meet their minimum capital requirements, and some banks still remain with significant capital buffers. The reason for this low sensitivity of capital to drawdowns is that banks already provision capital based on 50 percent of the undrawn credit line and, therefore, capital levels factor in potential drawdowns.

There are important caveats and assumptions behind the results in this section. First, because our focus is on liquidity risks, we do not consider changes in credit risk following drawdowns on credit lines and their implications for regulatory capital. In particular, we do not examine worsening of credit conditions of borrowers that would also increase banks' loan loss provisioning and realized loan losses that reduce bank capital. Second, we ignore general equilibrium effects related to the fact that following a credit line drawdown, banks credit firms' deposit accounts, which are often with the same bank, and so such drawdowns do not immediately reduce the banks' liquid assets but would increase bank leverage through increased firm deposits. Third, we ignore additional inflows of deposits stemming from flight-to-safety dynamics or fiscal and monetary stimulus that the existing literature has emphasized as the main determinant of banks' liquidity capacity in times of stress. Finally, we also prohibit banks with liquidity shortfalls from accessing the discount window or the federal funds market. Thus, our liquidity capacity measures can be viewed as quite conservative estimates of banks' ability to service credit lines in times of stress.

4.5.4 Liquidity capacity and HQLA composition

The analysis in the previous sections assumes that banks can use all of their HQLAs to meet the demand for liquidity from the corporate sector. In this section, we examine how the liquidity capacity of the banking system changes when banks cannot utilize some of the assets that comprise the HQLAs, because, for example, they cannot easily and quickly convert these assets into cash in times of stress. The stress in March 2020 shows that even normally highly liquid assets such as Treasury securities can experience short periods of severe market illiquidity, precisely at a time when the demand for liquidity from the corporate sector is elevated (Duffie, 2020). It is thus important to understand how much the liquidity capacity of the banking system declines should

banks be unable to deploy all of their HQLAs.

The LCR defines two categories of assets that are eligible as HQLAs. Level 1 assets include cash and reserves with the Federal Reserve, Treasuries, and Government National Mortgage Association mortgage-backed securities (MBS). Level 1 assets are considered to be the safest and most liquid and do not require haircuts. Level 2 assets contain agency debt, agency MBS, and commercial mortgage-backed securities (CMBS) securities.¹⁴ Table 6 shows the composition of liquidity at the largest eight banks in our sample—designated as GSIBs and subject to the most stringent capital and liquidity regulation—and the remaining banks in our sample (non-GSIBs), at the end of 2019.¹⁵ U.S. GSIBs concentrate roughly three-quarters of the liquidity in the banking system. These large banks also have a significantly higher share of the more liquid Level 1 components of HQLA. Seventy percent of GSIBs’ HQLA is held in Level 1 assets, whereas 51 percent of non-G-SIB banks’ liquidity is in Level 1 assets.

The heterogeneity in liquidity positions is particularly important because most of the largest banks subject to the standard LCR are part of the core of the interbank network of fronting exposures and some are also net fronting banks, whereas the smaller and less liquid banks reside in the periphery. Such concentrations of liquidity in the core has implications for how shocks propagate in the network and the value of liquidity co-insurance provided by fronting exposures in times of stress. Table 7 reports the liquidity shortfalls in a scenario in which banks can only use their available cash and cash equivalents, which are predominantly in the form of reserves with the Federal Reserve. For all drawdown rates reported in the panel, banks experience liquidity shortfalls ranging from around 21 to 25 percent of the drawdown in the 10 percent and GFC scenarios to nearly 50 percent in the EAD scenario. These shortfalls are almost double the shortfalls observed when banks can use all of their HQLAs (see Table 3). The bulk of the shortfalls occur at smaller banks outside the group of the U.S. GSIBs, banks subject to the LCR, or banks that appear in the core of the fronting exposures network. However, for the 50 percent and EAD drawdown scenarios, 4 out of 10 banks in the core also experience liquidity shortfalls. Most of the remaining banks in the core have enough cash to withstand the liquidity shocks in all of the scenarios, and only one net fronting bank runs out of cash in the EAD scenario. Thus, the largest banks and the core of the interbank network remain resilient even if their available liquidity is restricted to cash and reserves

¹⁴Level 2 assets are subject to a 15 percent haircut and are capped at 40 percent of the total HQLA amount.

¹⁵GSIBs include JP Morgan, Bank of America, Wells Fargo, Citigroup, Morgan Stanley, Goldman Sachs, Bank of New York Mellon, and State Street. All banks are subject to the standard LCR requirement and most of them are part of the core of the network.

only. This also implies that shortfalls on sublimits remain significantly below overall shortfalls on credit line drawdowns.

5 Liquidity capacity and corporate liquidity management

Existing theory suggests that the liquidity management choices of the corporate sector are jointly determined with banks' liquidity capacity. [Holmström and Tirole \(1998\)](#) show that in the presence of limited pledgeability of firm assets or income to outside investors, firms need to secure funding in advance to insure against liquidity risks. The two main tools of liquidity management are accumulating cash or securing a credit line. The choice between the two liquidity management tools depends on the trade-off between the opportunity cost of accumulating and holding cash, and the cost of maintaining a credit line. [Acharya et al. \(2013\)](#) show theoretically and empirically that firms with higher aggregate risk exposures are more likely to simultaneously draw credit lines in crisis periods and such large drawdowns could lead to depletion of liquidity at banks and require banks to maintain larger stocks of liquid assets. The opportunity cost of holding liquid assets leads banks to charge a premium for originating credit lines to firms with aggregate risk exposures. The higher cost of credit lines tilts those firms' liquidity management choices towards cash and away from credit lines. The models of [Holmström and Tirole \(1998\)](#) and [Acharya et al. \(2013\)](#) imply that, all else being equal, corporations that rely more on credit lines in their liquidity management would prefer to obtain their credit lines from syndicates with higher liquidity capacity. We test two hypotheses that explore the relationship between liquidity capacity of banks and the liquidity management choices of firms.

Hypothesis 1 (H1): *Firms with higher reliance on credit lines for their liquidity management would borrow from syndicates with higher liquidity capacity.*

Hypothesis 2 (H2): *Firms with higher reliance on credit lines for their liquidity management would be charged higher credit spreads. Bank syndicates with higher liquidity capacities would charge lower credit spreads on credit lines, controlling for firm characteristics.*

H1 explores the idea that because banks are heterogeneous in their liquidity capacities and firms are heterogeneous in their liquidity demand, in equilibrium, there must be assortative matching on liquidity characteristics. The pricing of credit lines should also reflect the liquidity characteristics of firms and banks, which is explored in H2. All else equal, firms with higher reliance on credit lines

should pay higher fees than firms that maintain higher cash-to-asset ratios. Analogously, banks with higher liquidity capacities should offer cheaper credit lines conditioning on firm characteristics.

5.1 Corporate liquidity management

We study three main characteristics of liquidity management—the cash-to-asset ratio, the revolver-to-assets ratio, and the revolver-to-total liquidity ratio. Panel B of Table 1 and Table 8 reveal that individual borrowers and industries differ substantially in their liquidity management characteristics. We test for the presence of assortative matching between firms’ corporate liquidity management choices and the capacity of bank syndicates to absorb credit line drawdowns. Our empirical strategy is based on a decomposition of the liquidity management characteristics $LiqMan_{k,t}$ of firm k at time t into borrower-specific and bank-specific factors. Because most borrowers have a persistent long-term relationship with a lead bank, our empirical framework also examines the effects of the bank liquidity on firms’ liquidity management choices throughout the span of the relationship. In particular, we examine a firm-bank syndicate panel regression

$$LiqMan_{k,t} = \beta'_L Liquidity_{i,t-1} + \beta'_E Capital_{i,t-1} + \beta'_D Deposits_{i,t-1} + \alpha_k + \beta_i + \tau_t + \gamma' X_{k,t-1} + \epsilon_{k,i,t}. \quad (10)$$

Our primary coefficient of interest is the association of firm liquidity management characteristics and banks’ liquidity positions, β_L . We use two measures of syndicate liquidity. The first is the HQLA-to-asset ratio of the lead bank and the average of the HQLA-to-asset ratios of other syndicate member banks. The second is an indicator for whether the lead bank is a net fronting bank. The two measures take into account both the individual liquidity positions of lead banks and their network exposures to liquidity risks of other banks. We also control for other observable bank characteristics such as regulatory capital as measured by CET1 and the share of stable funding in the form of insured deposits.

In terms of observable firm characteristics $X_{k,t-1}$, we use variables that proxy for corporate liquidity demand such as firms’ investment opportunity set as measured by Tobin’s Q, leverage, and profitability. We include a measure of firms’ systemic risk based on the 12-month rolling window correlation of the firm’s stock return with a bank stock return index constructed for the banks in our sample. Finally, we control for credit risk with the firm’s credit rating and the five-year empirical default frequency (EDF). To control for unobservable firm and bank characteristics, we include a set of firm α_k and a set of lead-bank fixed effects β_i . To absorb aggregate and industry-level trends,

we also include a set of industry-time fixed effects τ_t .¹⁶

The results of the estimation are summarized in Table 9. The first three columns, which examine only firm characteristics, replicate findings by Acharya et al. (2013). More systemic firms as measured by higher bank industry betas rely more on cash and less on credit lines in their liquidity management. The effects are sizable and statistically significant. An increase in a firm’s bank industry beta by one unit increases the cash-to-asset ratio by about 1 percentage point, reduces the revolver-to-asset ratio by about 60 basis points, and increases the revolver-to-liquidity ratio by about 4 percentage points. Other firm characteristics, such as investment opportunities measured by Tobin’s Q, increase both the use of cash and revolvers, but overall higher Tobin’s Q shifts liquidity management towards cash. Conditioning on leverage and profitability, firms with higher credit risk as measured by credit rating or EDF have lower shares of credit lines.

Columns (3) through (6) examine the effects of lead and syndicate member bank characteristics conditioning on observable and unobservable firm characteristics. A lead bank with a 10 percentage point higher share of liquid assets is lending to firms that, on average, have 1 percentage point lower cash-to-assets ratios, 90 basis points higher revolver-to-asset ratios, and 4 percentage points higher share of credit lines in their overall liquidity management. Firms borrowing from syndicates with a lead bank that is a net fronting bank have 2 percentage points lower cash-to-asset ratios and 9 percentage points higher share of credit lines in their liquidity management. The results are both statistically and economically significant given the historical distribution of liquidity management characteristics.

The relationship between firm liquidity management and syndicate liquidity is not static over our sample period and is likely to be impacted by liquidity regulation on banks. To capture the time variation in this relationship, we re-estimate our baseline regression, adding an interaction term between banks’ HQLA-to-asset ratios and yearly dummy variables. Figure 10 plots the estimates of the time-varying sensitivity of firms’ revolver-to-asset ratios to the HQLA-to-asset ratios of lead banks (panel A) and of member banks (panel B). The coefficient estimates for the lead bank’s liquidity are not statistically significant at the 5 percent level in the first half of our sample; in fact, the relationship is negative in 2007. However, the estimates become statistically significant beginning in 2013 and remain so for most of the remaining sample period, averaging about 0.22. This estimate implies that for every 10 percentage point increase in the lead banks’ HQLA-to-asset

¹⁶We estimate the regression model as a high-dimensional panel fixed-effects regression using the method of alternating projections implemented by Gaure (2013).

ratio, the borrower has, on average, 2.2 percentage points higher revolver-to-asset ratio. In contrast, the coefficient estimates for member banks remain close to zero and are statistically insignificant throughout the sample period.

These results are consistent with the stylized fact that member banks are smaller and less liquid because they are either exempt from liquidity regulation or subject to the less stringent LCR requirement. Furthermore, member banks are more likely to be recipients of fronting exposures from the lead bank, and their liquidity positions are less important for borrowers' ability to draw on credit lines. Even though we do not formally test whether the LCR regulation impacts the assortative matching on liquidity characteristics between borrowers and lead banks, the increase in the coefficient estimate in panel A coincides with the implementation of the LCR. In summary, the results of Table 9 and Figure 10 are in line with the predictions of our hypothesis H1.

5.2 Pricing of liquidity management

We next test H2 and examine whether and how liquidity management choices of firms and the liquidity characteristics of banks are priced in newly originated credit lines. The first part of hypothesis H2 is a statement about liquidity demand under stress. Firms with lower cash-to-asset ratios and higher reliance on credit lines and sublimits in their liquidity management mix are more likely to rely on their credit lines in times of stress. Therefore, banks would price this liquidity risk by charging higher fees. The second part of the hypothesis reflects the degree to which liquidity at banks is scarce. All else being equal, higher liquidity capacity should reduce the cost of credit lines. We use the following empirical specification to test this hypothesis

$$\begin{aligned} Spread_{k,i,t} = & \alpha_k + \beta_i + \tau_t + \lambda' LiqMan_{k,t-1} + \gamma' X_{k,t-1} + \\ & \beta'_L Liquidity_{i,t-1} + \beta'_E Capital_{i,t-1} + \beta'_D Deposits_{i,t-1} + \xi_{k,i,t}. \end{aligned} \quad (10)$$

We examine two credit spreads. The first is the all-in-spread drawn (AISD), which contains all the fees and interest rate spreads that the firm is charged at origination and for drawn portions of revolvers. The second is the all-in-spread undrawn (AISU), which contains all the fees that are charged for the undrawn portion of credit lines. We examine the effect of the lagged liquidity management characteristics of the firm, controlling for other observable and unobservable firm characteristics. The second line examines the role of the same bank characteristics as those in the liquidity management regression. The panel regression includes a set of firm, bank, and industry-time fixed effects to absorb unobserved firm and bank characteristics and industry trends.

The results of the regression are presented in Table 10. The first three columns examine the AISD spreads and the last three columns examine the AISU spreads. The first and fourth columns include only firm variables. The second and third columns, and the fifth and sixth columns add lead bank characteristics and average syndicate member bank characteristics, respectively. First, as predicted by H2, firms with liquidity management that relies more on bank credit lines are charged higher AISD and AISU fees. The use of sublimits entails, on average, around 17 to 19 basis points higher AISD fees and around 6 basis points higher AISU fees. This is consistent with the higher liquidity risks associated with the same-day delivery of funds under sublimit drawdowns. A firm with a higher revolver-to-asset ratio is also charged higher fees. A firm with a 10 percentage point higher share of revolvers-to-asset ratio is, on average, charged around 5 basis points higher AISD and close to 1 basis point higher AISU. In contrast, firms with higher liquidity as measured by the stock of their cash-to-asset ratios or their cashflows measured by the returns on assets pay, on average, lower fees for obtaining a new credit line. Finally, as expected, riskier firms with high leverage, high bank industry betas, and high expected default frequencies are charged higher fees.

Bank liquidity positions also matter for the pricing of credit lines. Lead banks with higher HQLA-to-asset ratios and banks with positive net fronting positions offer cheaper credit lines. For example, the estimates imply that a bank with a 10 percentage point higher HQLA-to-assets ratio demands, on average, 8 basis points lower AISD fees and 2 basis points lower AISU fees. The effect, however, becomes insignificant when member bank characteristics are included. Syndicates with more liquid member banks offer lower fees on credit lines. Syndicate member banks with 10 percentage points higher HQLA-to-asset ratios offer, on average, 20 basis points lower AISD and 6 basis points lower AISU credit spreads. Finally, syndicates with lead banks with net positive fronting exposures charge significantly lower fees on credit lines. Depending on the specification, the AISD spreads are between 37 and 44 basis points lower, and the AISU spreads are between 4 and 5 basis points lower. The lower cost of credit lines provided by net-fronting banks is consistent with the fact that these banks pool the idiosyncratic liquidity risks of a larger set of borrowers. The results of this section provide further evidence for the assortative matching hypothesis by showing that the matching on liquidity characteristics of the firms and the bank syndicates are in fact priced in a way consistent with variation of liquidity demand and supply factors.

6 Conclusion

We contribute to the theoretical and empirical literature that examines the role of banks as liquidity providers to the corporate sector. We document a little known feature of syndicated credit facilities—fronting exposures—that allow banks to share liquidity risks related to credit line draw-downs. We characterize the resulting network of interbank exposures and show that it has a well-defined core-periphery structure with a densely connected core of large banks. We construct a measure of banks’ liquidity capacity that imposes individual and aggregate resource constraints on banks’ available liquidity, taking into account the interconnectedness of banks’ balance sheets.

The introduction of liquidity requirements on the largest banks increased balance sheet liquidity and reduced reliance on unstable STWF in the post-GFC period. These reforms significantly improved the capacity of large banks in the core of the network to co-insure liquidity risks and provide liquidity to the corporate sector in times of stress. Banks’ role as providers of corporate liquidity became even more important in the post-GFC period because of the increasing assortative matching between the liquidity management choices of the corporate sector and the liquidity positions of syndicate lead banks. Firms with higher reliance on credit lines in their liquidity management have become more likely to obtain credit lines from syndicates that have higher liquidity capacity. We also document that the expansion of liquidity capacity has significantly lowered the cost of providing credit lines to the corporate sector.

Our analysis and results suggest several avenues for future research. First, extending the model to incorporate the constraints on banks resulting from liquidity and capital regulation is an important next step. This extension would allow us to evaluate the endogenous response of banks’ liquidity positions to regulation and exposures to the corporate sector. It would also allow for welfare analysis of the design of liquidity and capital regulation. Second, we have shown that fronting exposures play an important role in reallocating liquidity among banks in a stress scenario. However, such reallocation is not sufficient to resolve the increasing liquidity gap between large banks in the core and small banks in the periphery. Mechanisms of coinsurance other than the explicit fronting commitments may emerge between the fronting bank and borrowers that are based on long-term relationships and implicit contracts that insure borrowers against illiquidity of member banks as emphasized by [Santos and Viswanathan \(2020\)](#). Our liquidity capacity measure, therefore, does not capture all the coinsurance potential of the interbank network that emerges from the process of loan syndication.

Third, we have provided evidence for assortative matching on liquidity characteristics of borrowers and banks that has become more pronounced in the post-GFC period. To understand the welfare implications of such matching would require modeling firms' endogenous choices of liquidity management and exposures to liquidity risks as a function of banks' liquidity capacities. Such modeling would allow for structural estimation of the supply and demand factors behind the equilibrium choices. Finally, our framework could be used in tailoring the size of future government interventions designed to stabilize credit and funding markets. Our liquidity capacity measure indicates that the banking system could have absorbed significantly larger drawdowns on credit lines during the COVID-19 pandemic without government intervention. However, this would require both relaxing liquidity requirements on the largest banks and facilitating further reallocations of liquidity accumulated at the largest banks to less liquid periphery through an active interbank market above and beyond the effective reallocations based on the existing contractual fronting exposures.

References

- Acharya, Viral, Heitor Almeida, Filippo Ippolito, and Ander Pérez Orive, 2020, Bank lines of credit as contingent liquidity: Covenant violations and their implications, *Journal of Financial Intermediation* 44, 100817.
- Acharya, Viral V, Heitor Almeida, and Murillo Campello, 2013, Aggregate risk and the choice between cash and lines of credit, *The Journal of Finance* 68, 2059–2116.
- Acharya, Viral V, Heitor Almeida, Filippo Ippolito, and Ander Perez-Orive, 2021a, Credit lines and the liquidity insurance channel, *Journal of Money, Credit and Banking* 53, 901–938.
- Acharya, Viral V, Rahul Singh Chauhan, Raghuram G Rajan, and Sascha Steffen, 2022, Liquidity dependence: Why shrinking central bank balance sheets is an uphill task, *Available at SSRN* <http://dx.doi.org/10.2139/ssrn.4216001> .
- Acharya, Viral V, Robert F Engle, and Sascha Steffen, 2021b, Why did bank stocks crash during COVID-19?, *National Bureau of Economic Research, Working Paper 28559* .
- Acharya, Viral V, and Nada Mora, 2015, A crisis of banks as liquidity providers, *The Journal of Finance* 70, 1–43.
- Acharya, Viral V, and Sascha Steffen, 2020, The risk of being a fallen angel and the corporate dash for cash in the midst of COVID, *The Review of Corporate Finance Studies* 9, 430–471.
- Aldasoro, Iñaki, and Ester Faia, 2016, Systemic loops and liquidity regulation, *Journal of Financial Stability* 27, 1–16.
- Allen, Franklin, and Douglas Gale, 2000, Financial contagion, *Journal of Political Economy* 108, 1–33.
- Anderson, Haelim, Mark Paddrik, and Jessie Jiaxu Wang, 2019, Bank networks and systemic risk: Evidence from the national banking acts, *American Economic Review* 109, 3125–61.
- Bellucci, Michael, and Jerome McCluskey, 2017, The LSTA’s complete credit agreement guide, *McGraw Hill Education* Second Edition.
- Beltran, Daniel O., Valentin Bolotnyy, and Elizabeth Klee, 2021, The federal funds network and monetary policy transmission: Evidence from the 2007–2009 financial crisis, *Journal of Monetary Economics* 117, 187–202.
- Bharath, Sreedhar T, Sandeep Dahiya, Anthony Saunders, and Anand Srinivasan, 2011, Lending relationships and loan contract terms, *The Review of Financial Studies* 24, 1141–1203.
- Brunetti, Celso, Jeffrey H. Harris, Shawn Mankad, and George Michailidis, 2019, Interconnectedness in the interbank market, *Journal of Financial Economics* 133, 520 – 538.

- Cai, J., F. Eidamb, A. Saunders, and S. Steffen, 2018, Syndication, interconnectedness, and systemic risk, *Journal of Financial Stability* 34, 105–120.
- Campello, Murillo, Erasmo Giambona, John R. Graham, and Campbell R. Harvey, 2011, Liquidity management and corporate investment during a financial crisis, *The Review of Financial Studies* 24, 1944–1979.
- Cetina, Jill, and Katherine I Gleason, 2015, The difficult business of measuring banks’ liquidity: Understanding the liquidity coverage ratio, *Office of Financial Research Working Paper* 15-20.
- Chava, Sudheer, and Michael R. Roberts, 2008, How does financing impact investment? The role of debt covenants, *The Journal of Finance* 63, 2085–2121.
- Chodorow-Reich, Gabriel, 2014, The employment effects of credit market disruptions: Firm-level evidence from the 2008–9 financial crisis, *The Quarterly Journal of Economics* 129, 1–59.
- Chodorow-Reich, Gabriel, Olivier Darmouni, Stephan Luck, and Matthew Plosser, 2021, Bank liquidity provision across the firm size distribution, *Journal of Financial Economics* (in press).
- Cornett, Marcia Millon, Jamie John McNutt, Philip E. Strahan, and Hassan Tehranian, 2011, Liquidity risk management and credit supply in the financial crisis, *Journal of Financial Economics* 101, 297–312.
- Craig, Ben, and Goetz von Peter, 2014, Interbank tiering and money center banks, *Journal of Financial Intermediation* 23, 322 – 347.
- Diamond, Douglas W, and Anil K Kashyap, 2016, Liquidity requirements, liquidity choice, and financial stability, *Handbook of macroeconomics* 2, 2263–2303.
- Duffie, Darrell, 2020, Still the world’s safe haven? Redesigning the U.S. treasury market after the COVID-19 crisis, *Hutchins Center Working Paper* 6 .
- Eisenberg, Larry, and Thomas H Noe, 2001, Systemic risk in financial systems, *Management Science* 47, 236–249.
- Eppstein, David, Maarten Löffler, and Darren Strash, 2010, Listing all maximal cliques in sparse graphs in near-optimal time, *Springer, Algorithms and Computation ISAC, Berlin, Heidelberg* 6506, 403–414.
- Erol, Selman, and Guillermo Ordoñez, 2017, Network reactions to banking regulations, *Journal of Monetary Economics* 89, 51–67.
- Farboodi, Maryam, 2014, Intermediation and voluntary exposure to counterparty risk, *Available at SSRN 2535900* .
- Gatev, Evan, T. Shuermann, and Philip E. Strahan, 2009, Managing bank liquidity risk: How deposit-loan synergies vary with market conditions, *Review of Financial Studies* 22, 995–1020.

- Gatev, Evan, and Philip E. Strahan, 2006, Banks advantage in hedging liquidity risk: Theory and evidence from the commercial market, *Journal of Finance* 61, 867–892.
- Gatev, Evan, and Philip E. Strahan, 2009, Liquidity risk and syndicate structure, *Journal of Financial Economics* 93, 490–504.
- Gaure, Simen, 2013, OLS with multiple high dimensional category variables, *Computational Statistics and Data Analysis* 66, 8–18.
- Gencay, Ramazan, Hao Pang, Michael C. Tseng, and Yi Xue, 2020, Contagion in a network of heterogeneous banks, *Journal of Banking and Finance* 111, February, 105725.
- Glasserman, Paul, and H Peyton Young, 2016, Contagion in financial networks, *Journal of Economic Literature* 54, 779–831.
- Greenwald, Daniel L, John Krainer, and Pascal Paul, 2020, The credit line channel, *Federal Reserve Bank of San Francisco working paper* 26.
- Gupta, Abhimanyu, Sotirios Kokas, and Alexander Michaelides, 2017, Credit market spillovers: Evidence from a syndicated loan market network .
- Harris, Jeffrey H, Edwin Hu, and Ioannis Spyridopoulos, 2020, Loan syndication networks, *Working paper available at SSRN 3295980* .
- Holmström, Bengt, and Jean Tirole, 1998, Private and public supply of liquidity, *Journal of Political Economy* 106, 1–40.
- Ihrig, Jane, Edward Kim, Cindy M. Vojtech, and Gretchen C. Weinbach, 2001, How have banks been managing the composition of high-quality liquid assets?, *Federal Reserve Bank of St. Louis Review* 101, 177–201.
- Ippolito, Filippo, José-Luis Peydró, Andrea Polo, and Enrico Sette, 2016, Double bank runs and liquidity risk management, *Journal of Financial Economics* 122, 135–154.
- Ivashina, Victoria, 2009, Asymmetric information effects on loan spreads, *Journal of Financial Economics* 92, 300–319.
- Ivashina, Victoria, and David Scharfstein, 2010, Bank lending during the financial crisis of 2008, *Journal of Financial Economics* 97, 319–338.
- Kapan, Tumer, and Camelia Minoiu, 2020, Liquidity insurance vs. credit provision: Evidence from the COVID-19 crisis, *Working paper available at SSRN 3773328* .
- Karolyi, Stephen A., 2015, The amplification of credit market disruptions by interbank relationships, *Working paper available at SSRN 2572704* .

- Kashyap, Anil K., Raghuram Rajan, and Jeremy C. Stein, 2002, Banks as liquidity providers: An explanation for the coexistence of lending and deposit taking, *Journal of Finance* 57, 33–73.
- Keil, Jan, 2018, Do relationship lenders manage loans differently?, *Unpublished working paper* .
- Li, Lei, Philip E Strahan, and Song Zhang, 2020, Banks as lenders of first resort: Evidence from the COVID-19 Crisis, *The Review of Corporate Finance Studies* 9, 472–500.
- Pennacchi, George, 2006, Deposit insurance, bank regulation, and financial system risks, *Journal of Monetary Economics* 53, 1–30.
- Rochet, Jean-Charles, and Jean Tirole, 1996, Interbank lending and systemic risk, *Journal of Money, Credit and Banking* 28, 733–762.
- Santos, Joao A. C, and S. Vish Viswanathan, 2020, Bank syndicates and liquidity provision, *National Bureau of Economic Research* 27701.
- Schwert, Michael, 2018, Bank capital and lending relationships, *The Journal of Finance* 73, 787–830.
- Sufi, Amir, 2007, Bank lines of credit in corporate finance: An empirical analysis, *The Review of Financial Studies* 22, 1057–1088.
- Yankov, Vladimir, 2020, The liquidity coverage ratio and corporate liquidity management, *FEDS Notes, 2020-02* .
- Zawadowski, Adam, 2017, Interwoven lending, uncertainty, and liquidity hoarding, *Boston University School of Management working paper* .

Table 1: **Descriptive statistics:** The data are quarterly and span the period from 2004:Q1 to 2020:Q2. Variables with significant outliers are truncated symmetrically at 1 percent of their historical distributions. The data contain an unbalanced panel of 5451 borrowers and 754 bank holding companies, of which 165 are lead banks. Source: Refinitiv DealScan and LoanConnector, Moody’s KMV, S&P Compustat (WRDS), CRSP (WRDS), FR Y-9C, and authors’ calculations.

Statistic	Mean	St. Dev.	Min	25th	Median	75th	Max
A.1 Contract characteristics: Credit lines without sublimits							
Credit line amount (\$mn)	826.5	1,415	5	95	300	900	11,094
All-in-drawn spread (bps)	166.4	114.5	15.50	70.00	150.0	250.0	537.5
All-in-undrawn spread (bps)	26.73	18.85	4.12	11.25	22.50	37.50	108.8
Maturity (months)	50.92	26.62	0.00	35.83	58.25	59.92	892.8
Financial covenant (0,1)	0.23	0.42	0	0	0	0	1
A.2 Contract characteristics: Credit lines with sublimits							
Credit line amount (\$mn)	734.9	1,096	10	105	300	850	7,655
Sublimit amount (\$mn)	157.5	278.3	1	20	60	155	2,285
Sublimit (% of credit line)	25.03	18.46	1.68	11.11	20.00	33.33	98.33
All-in-drawn spread (bps)	171.3	86.60	23.00	105.0	156.3	225.0	444.0
All-in-undrawn spread (bps)	31.26	15.69	6.25	18.50	28.75	43.75	99.00
Maturity (months)	52.69	13.36	0.00	46.07	58.67	59.93	119.4
Financial covenant (0,1)	0.87	0.33	0	1	1	1	1
B. Borrower characteristics							
Borrower assets (\$bn)	17.97	63.77	0.010	0.712	2.462	9.952	1,781
Leverage (Debt/Assets)	59.95	18.05	12.98	47.76	60.75	72.84	97.05
Cash-to-assets	7.94	9.23	0	1.61	4.60	10.70	53.88
Liquidity-to-assets	22.99	15.19	0.84	11.64	19.54	30.98	80.41
Revolver-to-liquidity	66.72	27.39	0	46.19	73.15	91.44	100.0
Return on assets	2.97	9.07	−53.11	0.34	3.38	7.12	33.64
Tobin’s Q	1.59	0.73	0.69	1.09	1.37	1.84	5.28
Market β	1.12	0.47	−0.01	0.81	1.09	1.41	2.51
Bank stock index beta	1.23	0.59	−0.10	0.82	1.18	1.62	2.97
Moody’s EDF (5-year)	1.55	2.08	0.07	0.29	0.77	1.83	13.94
Moody’s credit rating	Ba2	-	C	B2	Ba2	Baa2	Aaa

Continues on next page.

Statistic	Mean	St. Dev.	Min	25th	Median	75th	Max
C.1 Lead bank characteristics							
Total assets (\$bn)	1,145	884.6	0.16	254.2	1,032	2,032	2,765
CET1 ratio	10.37	2.96	0.23	8.35	10.23	11.92	107.8
Securities-to-assets	16.01	6.41	0.00	11.53	15.45	19.87	86.29
HQLA-to-assets	12.72	6.61	0.06	7.17	11.14	17.79	86.29
Insured-deposits-assets	27.55	14.25	0.06	14.86	29.45	36.72	90.46
STWF-to-total assets	29.33	16.22	0.06	17.35	26.09	41.58	92.59
Return on assets	0.80	1.08	-38.77	0.53	0.96	1.30	25.60
C.2 Member bank characteristics							
Total assets (\$bn)	608.4	460.5	0.15	266.3	530.1	819.8	2,765
CET1 ratio	10.84	3.09	0.23	8.63	10.72	12.40	107.8
Securities-to-assets	17.03	5.01	0.00	13.85	16.91	19.79	86.29
HQLA-to-assets	12.44	5.28	0.06	8.39	11.99	15.76	86.29
STWF-to-assets	25.92	11.67	0.06	17.73	24.79	32.46	92.59
Insured deposits-to-assets	32.02	12.17	0.02	24.86	32.05	38.79	90.46
Return on assets	0.78	0.95	-21.04	0.56	0.90	1.21	25.60

Table 2: **Drawdown rates of credit lines under stress by industry.** The first column shows the average utilization rates of credit lines in 2007. The second column shows drawdown rates of the undrawn portions of credit lines during the GFC computed using CapitalIQ. The last three columns show utilization rates on total committed amounts and drawdown rates on the unutilized portions of syndicated credit lines observed in FR Y-14 data. Expected drawdown rates at default (EAD) are derived from the reported expected EAD minus the current utilized amount as a fraction of the undrawn amount. SOURCE: S&P CapitalIQ, FR Y-14, and authors' calculations.

Industry 2-digit NAICS code	Utilization 2007 (1)	Drawdown		Drawdown COVID 2020:Q1 (4)	Drawdown EAD 2019:Q4 (5)
		GFC 2007-2009 (2)	Utilization 2019:Q4 (3)		
11 Agriculture	42.4	-4.5	34.2	-3.3	51.1
21 Mining, Oil, and Gas	44.0	24.7	29.5	7.8	54.5
22 Utilities	19.2	20.4	14.3	8.7	55.1
23 Construction	34.2	2.8	22.7	15.7	50.6
31-33 Manufacturing	21.9	8.3	19.6	15.2	53.8
42 Wholesale Trade	35.8	9.3	36.7	11.0	49.1
44-45 Retail Trade	22.6	6.2	28.7	19.7	51.5
48-49 Transportation and Warehousing	33.0	21.9	25.6	18.8	54.1
51 Information	23.3	7.9	23.2	13.0	49.8
52 Non-bank Financial Companies	33.3	7.9	37.4	12.1	53.3
53 Real Estate and Rental and Leasing	35.7	9.4	29.3	20.6	61.3
54 Professional and Technical Services	27.2	8.0	24.4	19.4	48.0
56 Admin. and Support Services	30.2	6.2	31.1	19.7	49.2
61 Educational Services	14.1	7.9	17.0	11.9	55.5
62 Health Care	24.4	12.7	23.8	20.9	59.8
71-72 Arts, Lodging, and Food Services	31.1	22.4	32.5	47.5	52.6
81-92 Other services	31.0	13.1	25.1	14.1	60.3
Aggregate	29.6	8.8	27.1	15.6	53.6

Table 3: **Liquidity shortfalls.** The aggregate amount of HQLA assets in the banking system was \$833 billion in 2006 and \$ 3727 billion in 2019. The aggregate amount of STWF was \$4650 billion in 2006 and \$4197 billion in 2019. The core of fronting banks includes 14 banks in 2006 and 12 banks in 2019. The GFC, COVID, and EAD scenarios are based on the reported drawdown rates by industry in Table 2.

Drawdown rate (α)	2006Q4						2019Q4					
	10 %	15 %	50 %	GFC	COVID	EAD	10 %	15 %	50 %	GFC	COVID	EAD
Drawdown amount (\$)	182	272	908	215	282	970	440	660	2201	534	653	2346
— Sublimits (\$)	35	53	176	43	54	188	32	49	162	41	47	175
Drawdown/HQLA (pct)	0.24	0.36	1.2	0.28	0.37	1.29	0.13	0.19	0.65	0.16	0.19	0.69
Drawdown/(HQLA-0.1 x STWF) (pct)	0.58	0.86	2.88	0.68	0.89	3.08	0.15	0.22	0.73	0.18	0.22	0.78
A. No outflows of short-term wholesale funding ($\lambda_B = 0$)												
Overall shortfall (\$)	12	24	335	18	25	386	42	94	741	66	89	811
Overall shortfall (pct)	0.06	0.09	0.37	0.08	0.09	0.4	0.1	0.14	0.34	0.12	0.14	0.35
Sublimit shortfall (\$)	0.2	0.5	51	0.6	0.4	61.29	0.5	1.3	13	1	1	14
Sublimit shortfall (pct)	0.01	0.01	0.29	0.01	0.01	0.33	0.02	0.03	0.08	0.03	0.02	0.08
Net fronting (\$)	1	2	23	2	3	25	0	2	26	1	2	29
Net fronting/Sublimit payment (pct)	0.03	0.05	0.19	0.04	0.05	0.2	0.01	0.04	0.17	0.03	0.04	0.18
Banks with shortfall	11	14	43	12	15	44	6	14	39	9	13	41
LCR banks	1	1	8	1	1	8	1	2	4	2	2	4
Core banks	1	2	13	1	3	13	0	0	1	0	0	1
Net fronting banks	0	0	3	0	0	3	0	0	0	0	0	0
B. Outflows of short-term wholesale funding ($\lambda_B = 10\%$)												
Overall shortfall (\$)	43	90	666	59	95	727	62	124	798	92	118	869
Overall shortfall (pct)	0.24	0.33	0.73	0.27	0.34	0.75	0.14	0.19	0.36	0.17	0.18	0.37
Sublimit shortfall (\$)	3.8	12	130	5.5	13	143	0.8	1.9	13	1.5	1.6	15
Sublimit shortfall (pct)	0.11	0.23	0.74	0.13	0.25	0.76	0.02	0.04	0.08	0.04	0.03	0.08
Net fronting (\$)	4	6	15	5	7	16	1	3	28	2	3	32
Net fronting/Sublimit payment (pct)	0.12	0.16	0.34	0.14	0.16	0.35	0.03	0.06	0.19	0.05	0.06	0.2
Banks with shortfall	33	39	62	35	41	63	12	20	51	16	21	51
LCR banks	4	6	10	4	6	10	2	2	4	2	2	4
Core banks	6	8	14	6	8	14	0	0	1	0	0	1
Net fronting banks	1	3	4	1	3	4	0	0	0	0	0	0

Table 4: **Regulatory liquidity and capital charges for undrawn credit lines.** Panel A shows the outflow assumptions applied to undrawn lines of credit when calculating the denominator of the liquidity coverage ratio (net outflow). Panel B reports the capital charges applied to undrawn lines of credit when calculating the denominator of the capital ratio (risk-weighted assets).

	Nonfinancial firms	Nonbank financial firms
A. LCR outflow assumptions		
Credit facilities	10%	40%
Liquidity facilities	30%	100%
B. On-balance sheet conversion factor		
Unconditionally cancellable	0%	0%
Not cancellable, ≤ 1 year	20%	20%
Not cancellable, > 1 year	50%	50%

Table 5: **Impact of credit line drawdowns on banks' capital and liquidity ratios.** The results are reported for all LCR banks and for U.S. G-SIBs alone, and under different assumptions on the sublimit and revolver draws. We report the average, minimum, and maximum ratios in the cross section of banks, and the number of banks that breach their regulatory minima. Regulatory capital is based on the CET1 risk-based capital ratio. The minimum capital ratio is set to 7 percent for non-GSIBs and to 7 percent plus GSIB surcharge for GSIBs. The minimum LCR ratio is set to 1 for GSIBs and banks with total assets greater than \$700 billion, 0.85 for banks with total assets between \$250 billion and \$700 billion, 0.7 for banks with total assets between \$100 billion and \$250 billion, and zero for all other banks. The analysis uses balance sheet data as of 2019Q4.

		Fraction drawn (%)					
		0	10%	25%	50%	75%	100%
A. Liquidity ratios							
All LCR banks	Average	1.23	0.98	0.79	0.55	0.39	0.25
	Min	1.06	0.55	0.21	0	0	0
	Max	1.75	1.27	1.11	1.04	1.01	0.97
	# breaches	0	6	10	14	14	15
U.S. GSIBs	Average	1.20	1.12	0.99	0.77	0.53	0.30
	Min	1.10	1.05	0.88	0.58	0.25	0
	Max	1.34	1.25	1.11	1.04	1.01	0.97
	# breaches	0	0	4	7	7	8
B. Capital ratios (%)							
All LCR banks	Average	12.30	12.12	12.00	11.89	11.81	11.77
	Min	7.44	7.43	7.42	7.37	7.36	7.36
	Max	26.19	24.39	23.85	23.02	22.57	22.56
	# breaches	0	0	0	0	0	0
U.S. GSIBs	Average	12.43	12.24	11.97	11.55	11.16	10.79
	Min	11.14	10.96	10.70	10.30	9.92	9.56
	Max	16.43	16.14	15.72	15.07	14.47	13.91
	# breaches	0	0	0	0	0	0

Table 6: **HQLAs and its components.** The Level 1 and Level 2 assets are obtained from FR-Y9C. HQLA are calculated by summing Level 1 and Level 2 assets, subject to a 15 percent haircut and 40 percent cap on Level 2 assets. U.S. GSIBs includes the eight largest bank holding companies by assets that are designated as systemically important. Those banks are subject to the Standard LCR requirement throughout our sample period and following the relaxation of those requirements in 2020Q1. SOURCE: FR Y-9C and authors' calculations.

	U.S. GSIBs		non-GSIBs	
	billion	% of total	billion	% of total
Level 1	2,279.29	70.9	592.73	51.2
–Cash and reserves	1,164.67	51.1	289.12	48.8
–Treasuries	838.42	36.8	186.26	31.4
–GNMA MBS	276.19	12.1	117.35	19.8
Level 2	937.10	29.1	565.57	48.8
–Agency debt	21.86	2.3	21.71	3.8
–Agency MBS	850.40	90.7	442.40	78.2
–Agency CMBS	64.84	6.9	101.46	17.9
Level 1 + Level 2	3,216.39	-	1,158.30	-
HQLA	3,075.82	-	882.64	-

Table 7: **Liquidity shortfalls and composition of liquidity.** The GFC, COVID, and EAD scenarios are based on the reported industry-specific drawdown rates in Table 2. In all scenarios, we assume equal drawdown rates on regular revolvers and sublimits. The table uses data as of 2019Q4 and assumes no outflows of STWF ($\lambda_B = 0$).

	Fraction drawn (%)					
	10 %	15 %	50%	GFC	COVID	EAD
	A. Cash and reserves					
Overall shortfall (\$)	94	193	1081	135	187	1175
Overall shortfall (pct)	0.21	0.29	0.49	0.25	0.29	0.5
Sublimit shortfall (\$)	1.83	3.6	22.39	2.39	3.37	25.79
Sublimit shortfall (pct)	0.06	0.07	0.14	0.06	0.07	0.15
Net fronting (\$)	3	7	44	5	7	48
Net fronting/Sublimit (pct)	0.09	0.15	0.32	0.12	0.15	0.32
Banks with shortfall	18	28	66	24	29	67
LCR banks	2	5	8	4	5	8
Core banks	0	2	4	1	2	4
Net fronting banks	0	0	1	0	0	1

Table 8: **Average liquidity management characteristics by industry.** The cash-to-asset ratio is computed as the ratio of reported cash and cash equivalents to total assets using Compustat data. Liquidity is defined as the sum of cash and cash equivalents and committed amounts of credit lines. The total outstanding sublimit amounts are computed from DealScan. SOURCE: DealScan, S&P CapitalIQ, and S&P Compustat.

Industry	Cash -to- asset (1)	Revolvers -to- assets (2)	Revolvers -to- liquidity (3)	Sublimits -to- revolvers (4)
11 Agriculture	1.1	24.2	94.0	4.5
21 Mining, oil, and gas	3.4	16.7	84.7	17.2
22 Utilities	0.6	5.8	89.3	32.6
23 Construction	6.9	16.7	67.9	32.7
31-33 Manufacturing	6.6	14.0	66.6	13.8
42 Wholesale Trade	2.0	22.6	90.3	13.3
44-45 Retail Trade	3.9	19.6	79.7	19.5
48-49 Transportation	3.0	8.4	71.4	20.6
51 Information	9.6	8.5	52.8	13.3
52 Non-bank financials	5.8	4.1	30.4	18.7
53 Real Estate	1.4	14.5	90.5	13.5
54 Professional and Technical Services	5.0	18.0	76.1	10.5
56 Administrative and Support Services	4.3	18.3	82.4	13.5
61 Educational Services	17.7	11.5	37.3	30
62 Health Care	2.6	8.6	72.5	17.0
71-72 Arts, lodging, and food services	5.0	12.9	68.3	20
81-92 Other services	1.6	30.3	89.1	12.5

Table 9: **Determinants of corporate liquidity management** We examine three liquidity management characteristics of firms (1) C/A cash-to-assets, (2) R/A revolvers-to-assets, and (3) R/(C+R) credit lines to total corporate liquidity. All regressions include firm, industry-time, and lead bank fixed effects. Standard errors are adjusted for auto-correlation and heteroscedasticity with clustering at the firm and bank levels. The sample is an unbalanced panel of covers 2004Q1-2019Q4. Significant at *p<0.1; **p<0.05; ***p<0.01.

	C/A (1)	R/A (2)	R/(C+R) (3)	C/A (4)	R/A (5)	R/(C+R) (6)
Bank industry β ,t-1	0.959*** (0.276)	-0.586** (0.297)	-3.986*** (0.800)	1.160*** (0.290)	-0.174 (0.303)	-4.216*** (0.838)
Tobin's Q,t-1	4.401*** (0.329)	1.410*** (0.279)	-7.003*** (0.693)	4.279*** (0.322)	1.435*** (0.284)	-6.696*** (0.697)
ROA,t-1	0.029*** (0.010)	0.014 (0.010)	-0.077*** (0.021)	0.030*** (0.009)	0.016* (0.009)	-0.076*** (0.021)
Leverage, t-1	-0.163*** (0.015)	0.022 (0.014)	0.320*** (0.038)	-0.162*** (0.015)	0.025* (0.014)	0.318*** (0.038)
S&P Rating, t-1	-0.648*** (0.073)	-0.213*** (0.071)	1.305*** (0.213)	-0.644*** (0.073)	-0.144** (0.070)	1.348*** (0.208)
EDF5, t-1	0.202* (0.104)	-0.394*** (0.141)	-1.341*** (0.368)	0.167* (0.101)	-0.362*** (0.138)	-1.246*** (0.361)
log(Borrower assets),t-1	1.413*** (0.194)	-3.894*** (0.183)	-8.976*** (0.507)	1.161*** (0.189)	-3.757*** (0.184)	-8.351*** (0.535)
log(Lead assets),t-1				0.990* (0.512)	1.777*** (0.600)	-2.144 (1.493)
Lead CET1, t-1				0.279*** (0.095)	0.020 (0.096)	-0.602** (0.258)
Lead insur. dep.,t-1				0.038 (0.024)	-0.101*** (0.029)	-0.105 (0.066)
Lead HQLA, t-1				-0.111*** (0.028)	0.088*** (0.033)	0.379*** (0.084)
Lead net front.> 0, t-1				-2.118*** (0.731)	-0.855 (1.299)	9.341*** (2.682)
log(Members assets),t-1				0.096 (0.224)	0.583** (0.262)	0.944 (0.680)
Members CET1, t-1				0.188** (0.086)	-0.108 (0.083)	-0.461** (0.213)
Members insur. dep.,t-1				-0.079*** (0.022)	0.113*** (0.020)	0.241*** (0.056)
Members HQLA, t-1				0.089** (0.038)	-0.060 (0.041)	-0.436*** (0.117)
Observations	47,082	47,082	47,082	47,026	47,026	47,026
Adjusted R ²	0.215	0.301	0.195	0.230	0.313	0.213

Table 10: **Pricing of corporate liquidity.** All regressions include lead firm, industry-time, time, and bank fixed effects. Auto-correlation and heteroscedasticity consistent standard errors are clustered at the bank and firm level.

	All-in-spread: drawn			All-in-spread: undrawn		
	(1)	(2)	(3)	(4)	(5)	(6)
Use of sublimit,t-1	17.27*** (6.254)	19.69*** (4.425)	18.07*** (4.500)	6.115*** (1.455)	6.247*** (1.224)	5.661*** (1.182)
Cash-to-assets,t-1	0.381** (0.186)	-0.116 (0.183)	0.007 (0.184)	-0.021 (0.025)	-0.057 (0.035)	-0.026 (0.035)
Revolver-to-assets,t-1	0.521*** (0.123)	0.412*** (0.086)	0.298*** (0.090)	0.082** (0.037)	0.076** (0.035)	0.042 (0.035)
Bank industry β ,t-1	5.124* (2.754)	20.63*** (4.153)	19.20*** (3.843)	4.136*** (0.682)	5.530*** (1.016)	5.119*** (0.954)
Firm ROA,t-1	-1.664*** (0.395)	-1.201*** (0.358)	-1.176*** (0.328)	-0.274*** (0.071)	-0.253*** (0.084)	-0.248*** (0.083)
EDF5, t-1	17.17*** (2.462)	15.98*** (2.250)	15.06*** (2.188)	3.555*** (0.876)	3.385*** (0.889)	3.038*** (0.854)
Firm leverage,t-1	0.256*** (0.092)	0.234** (0.093)	0.312*** (0.093)	0.052** (0.025)	0.052** (0.025)	0.079** (0.029)
log(Lead assets),t-1		41.36*** (8.113)	38.79*** (9.282)		5.988*** (1.681)	4.772** (2.087)
Lead CET1,t-1		14.79*** (1.435)	12.82*** (1.546)		1.519*** (0.434)	1.003** (0.422)
Lead insur. dep.,t-1		-0.305 (0.607)	-0.784 (0.586)		-0.084 (0.096)	-0.219** (0.091)
Lead HQLA-assets,t-1		-0.847*** (0.201)	-0.222 (0.214)		-0.253*** (0.055)	-0.055 (0.057)
Lead net front.> 0,t-1		-44.19*** (6.998)	-37.61*** (5.215)		-5.469** (1.978)	-4.023** (1.674)
log(Members assets),t-1			-6.196*** (2.214)			-0.450 (0.548)
Members CET1, t-1			5.621*** (1.106)			1.270*** (0.208)
Members insur. dep.,t-1			0.714*** (0.174)			0.235*** (0.045)
Members HQLA, t-1			-2.098*** (0.391)			-0.587*** (0.102)
Observations	4,146	3,932	3,884	3,537	3,366	3,325
Adjusted R ²	0.269	0.384	0.416	0.188	0.205	0.237

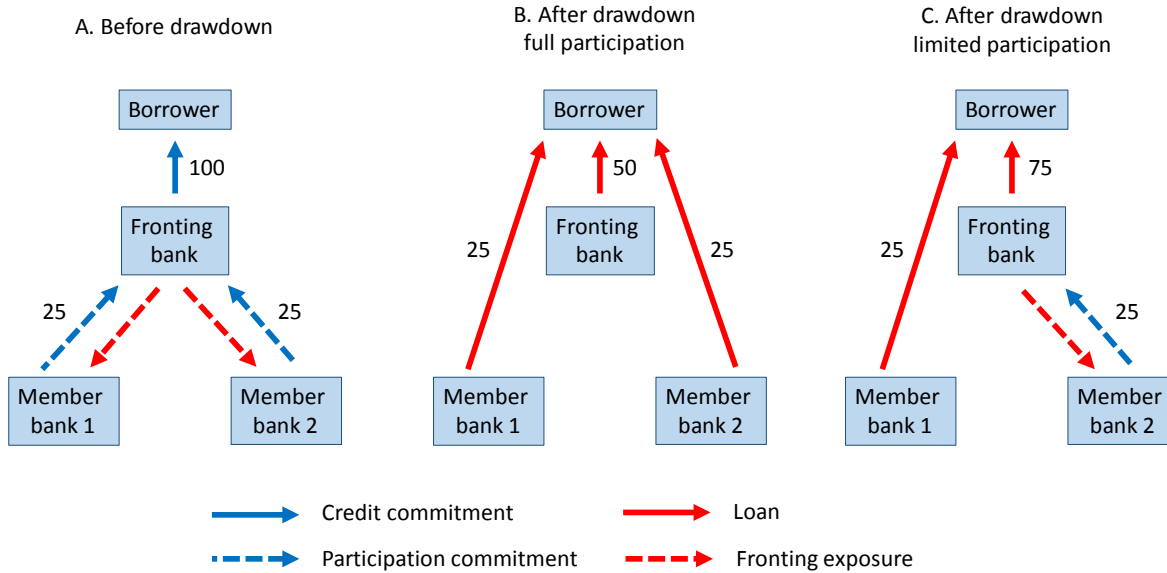


Figure 3: **Example of fronting exposures arising from swinglines.** A syndicate of three banks originates a revolving line of credit to a borrower. The revolver has a swingline of 100 and the pro-rata shares of the fronting bank and the two member banks are 0.5, 0.25, and 0.25, respectively. Panel A shows the credit commitments and fronting exposures implied by the swingline. Panel B shows a situation where the swingline is fully drawn and both member banks fully purchase their participations in the swingline loan. Panel C shows a case where member bank 2 fails to honor its commitment to the fronting bank and does not fund its participation in the swingline loan.

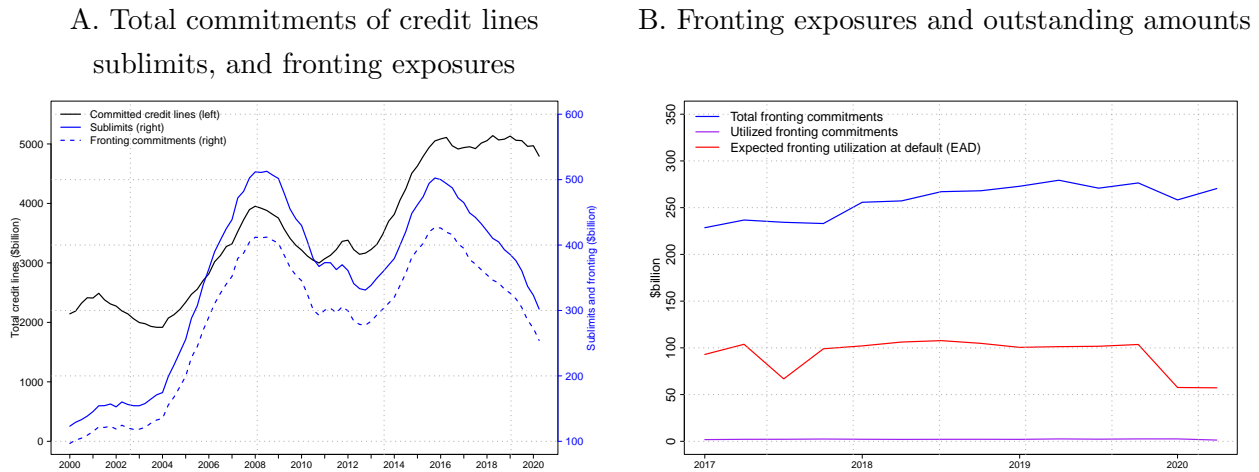


Figure 4: **Total committed amounts of credit lines, sublimits, and fronting exposures.** Panel A plots the aggregate committed amounts on syndicated credit lines, sublimits, and fronting exposures using data from DealScan. Panel B plots data from FR Y14 on the total fronting exposure commitments, the outstanding amounts on fronting exposures, and the expected outstanding amounts of fronting under default based on bank reports of expected exposures at default (EAD). SOURCE: Refinitiv Loan-Connector (DealScan), FR Y-14, and authors' calculation.

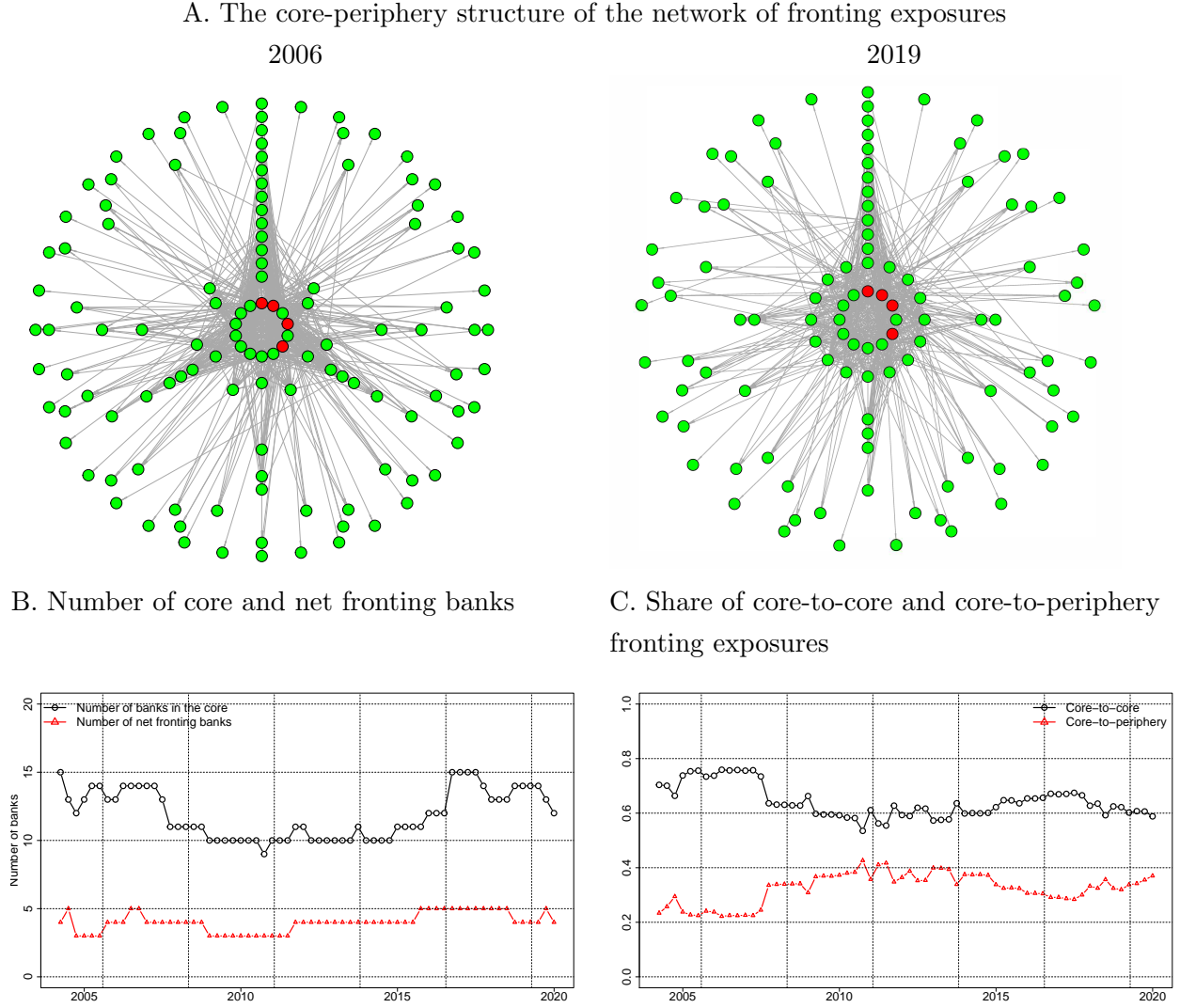


Figure 5: **The network of fronting exposures.** Panel A shows that the network of fronting exposures as of the end of 2006 on the left and as of the end of 2019 on the right. The network has a well-defined core-periphery structure. The core is defined as the largest set of banks in which any bank has both fronting-in and fronting-out exposures to all the other members of the core. We use the [Eppstein et al. \(2010\)](#) algorithm to identify the largest fully connected set of banks (maximal "clique"). We identify 14 and 12 banks to be in the core shown here as the inner most circle as of 2006Q4 and 2019Q4, respectively. The concentric circles of periphery banks surrounding the core are arranged based on fronting-in connectedness to the core. The red nodes are banks that are net providers of fronting exposures, whereas the green nodes are banks that are net recipients of fronting exposures. Panel B shows the number of core banks and the number of net fronting banks over the sample period. Panel C shows the share of fronting exposures among banks in the core and from banks in the core to banks in the periphery. SOURCE: DealScan and authors' calculations.

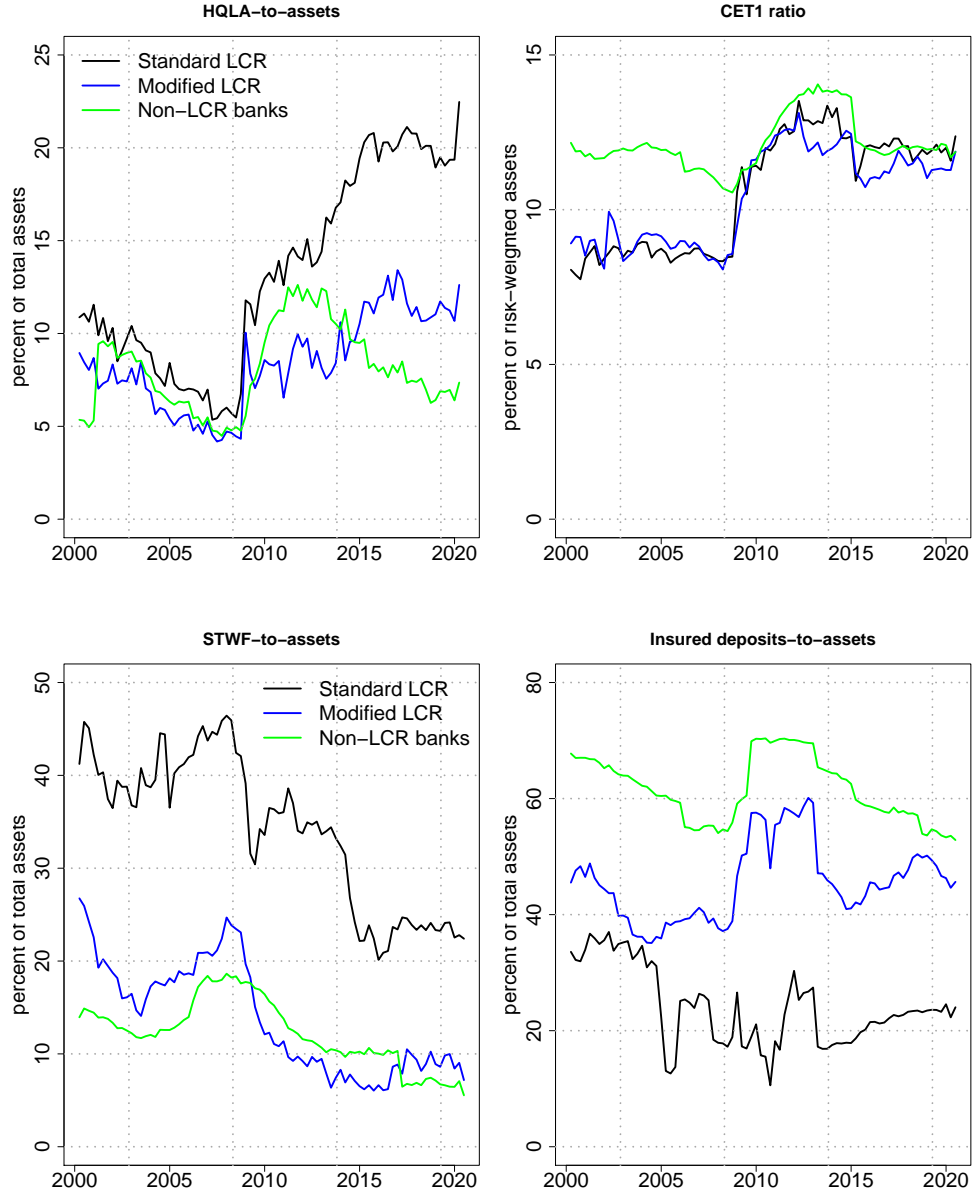


Figure 6: **Liquidity, capital, and funding sources at banks by LCR treatment.** Standard LCR banks are all banks with assets above \$250 billion. Modified LCR banks are those with total assets between \$50 billion and \$250 billion, and non-LCR banks are banks with less than \$50 billion in total assets. CET1 ratio is the ratio of CET1 capital to the total risk-weighted assets. STWF is all uninsured deposits and liabilities with outstanding maturities less than one year. Insured deposits includes all deposits below the relevant deposit insurance limit.

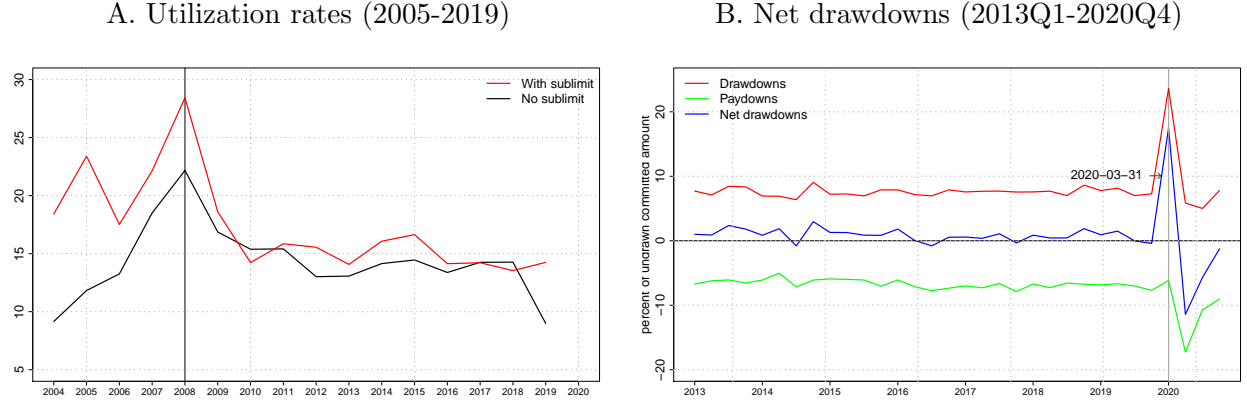


Figure 7: **Measures of aggregate drawdown rates.** Panel A uses annual data from S&P CapitalIQ (WRDS) to construct utilization rates of credit lines over the period 2005 to 2019. Utilization rate is the amount drawn as a fraction of the committed amount. Panel B uses quarterly FR Y-14 data to construct drawdowns, paydowns, and net drawdowns of credit lines as a fraction of the undrawn committed amount over the period 2013:Q1 to 2020:Q4.

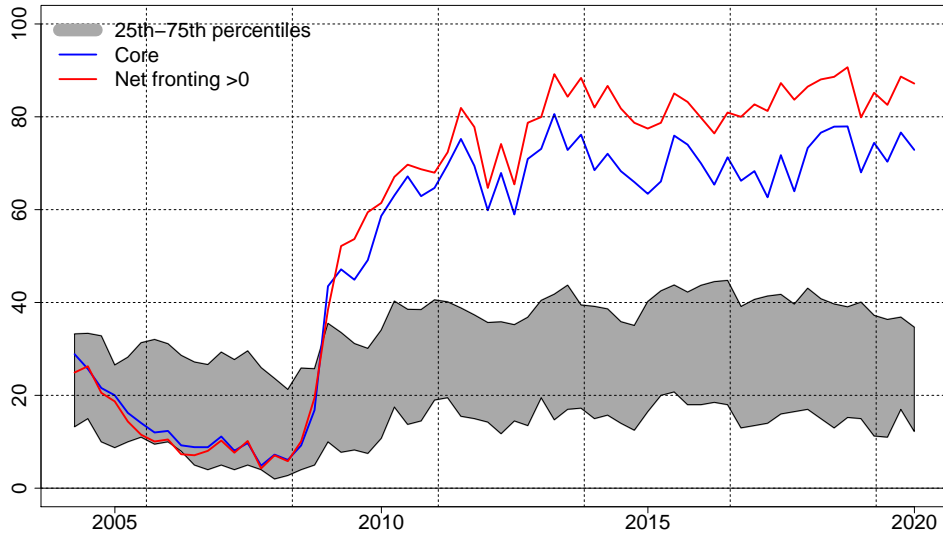
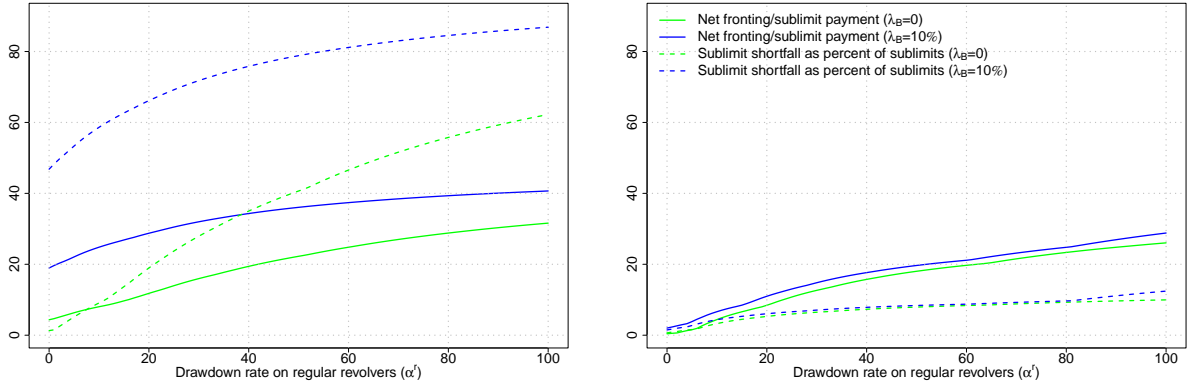


Figure 8: **Liquidity capacity as drawdown feasibility.** Drawdown feasibility is the maximum drawdown rate on both regular and credit lines with sublimits that would not deplete a bank's available liquidity. The shaded area is the inter-quartile range of drawdown feasibility across all banks in our sample. The blue and red lines are the weighted-average drawdown feasibility of banks in the core and net fronting banks, respectively. We also assume a simultaneous outflow of STWF $\lambda_B = 10$ %.

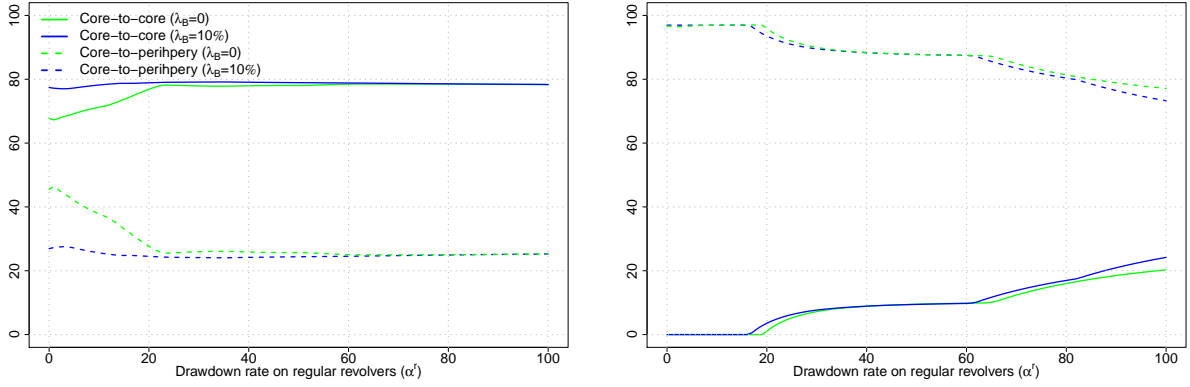
A. Sublimit shortfalls and net fronting

2006

2019



B. Net fronting among core banks and from core to periphery



C. Core banks with liquidity shortages

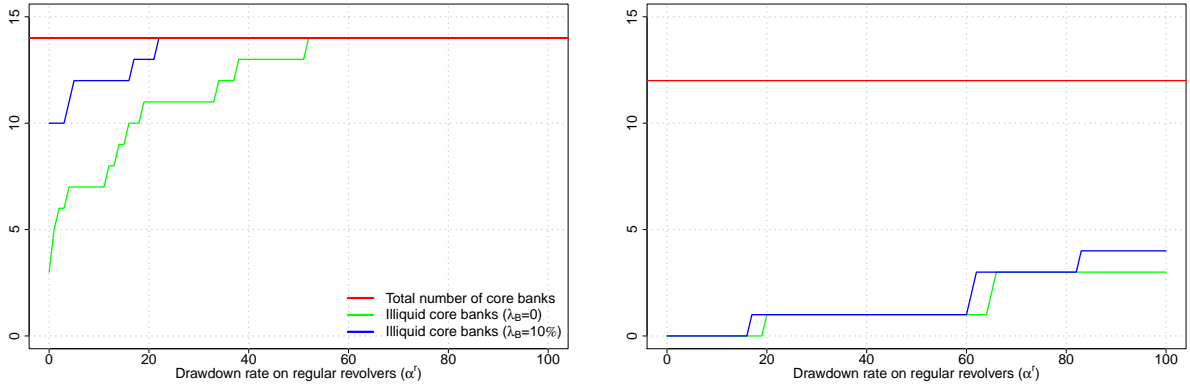


Figure 9: Liquidity shortages and liquidity reallocations through net fronting. In all exercises, we assume that firms with sublimits draw those components first and in full ($\alpha^s = 100$). The total sublimits amount to \$351 billion and \$325 billion or about 20 percent and 7 percent of the total undrawn credit line commitments in 2006 and 2019, respectively.

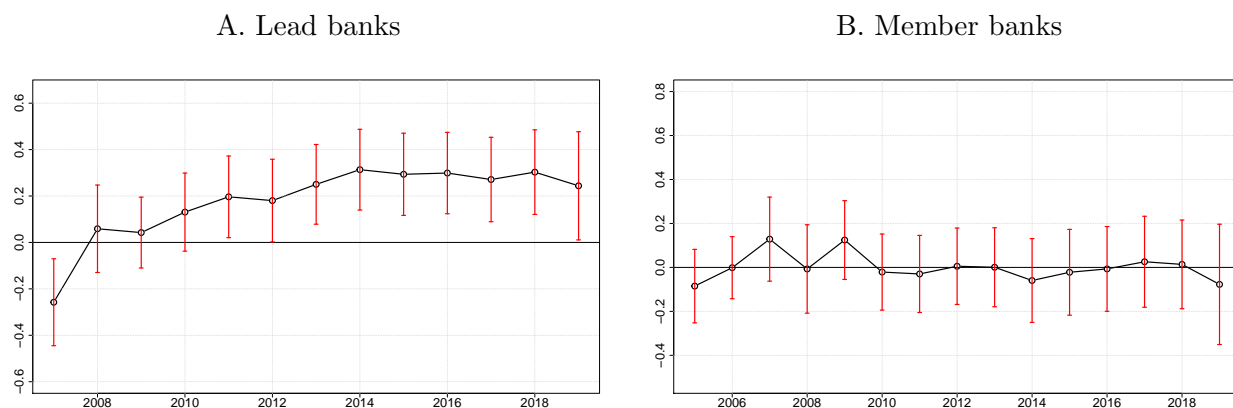


Figure 10: **Syndicate liquidity and firms' revolver-to-asset ratio.** The figure plots the coefficient estimates of the HQLA-to-asset ratio of the lead bank in panel A and the average HQLA-to-asset ratio of syndicate member banks excluding the lead bank in panel B estimated for each year based on interaction with yearly dummies. The red bars indicate the 95% confidence intervals of the coefficient estimates.

Internet Appendix

“Liquidity Provision and Co-insurance in Bank Syndicates”

Kevin F. Kiernan Vladimir Yankov Filip Žikeš

March 8, 2023

A Data sources and construction

A.1 DealScan

Our primary source of information on the structure of bank syndicates and the provision of credit lines and sublimits is Refinitiv Loan Connector (DealScan). We use and expand the DealScan-Compustat link constructed by [Chava and Roberts \(2008\)](#) to assign company identifiers (gvkeys) to match DealScan with Compustat, CRSP, and Moodys’ KMV datasets. We next expand the RSSD-DealScan linking table provided by [Keil \(2018\)](#) with the relationship tables from the National Information Center (NIC) to assign bank identifiers (RSSD IDs) and consolidate lenders at their parent bank holding company. We account for mergers and acquisitions by tracking the historical parent holding company using the NIC top holder tables. This allows us to merge consolidated bank holding company balance sheet and income statement data from FR Y-9C reports. To identify the lead credit arranger in the syndicate, we employ the procedure used by [Bharath et al. \(2011\)](#). Finally, to construct interbank exposures and the resulting network, we first allocate the committed credit and fronting exposure based on banks’ pro-rata shares in all active syndicates. For syndicates with missing information on pro-rata shares we use a procedure commonly used in the literature to assign pro-rata shares based on information from similar syndicates (e.g., [Schwert \(2018\)](#)).

While a combined version of the DealScan and FR Y-14 would be ideal, fundamental differences between the two datasets make such a merge impossible. First, DealScan data record a credit facility and the structure of the syndicate at origination. In contrast, FR Y-14 are a panel of credit facilities measured at a quarterly frequency since their origination. Second, FR Y-14 record whether a credit facility is syndicated or not but do not have a unique syndicate identifier that allows us to reconstruct the structure of the syndicate and its participating banks. Third, DealScan has a much more exhaustive universe of lenders involved in syndicated deals, whereas FR Y-14 are collected only for the largest bank holding companies subject to the Federal Reserve’s annual stress test exercises DFAST and CCAR.

A.2 Fronting exposures in FR Y-14

The FR Y-14 wholesale corporate schedule contains comprehensive loan-level and borrower-level information of banks’ lending to the corporate sector the purposes of the Federal Reserve’s DFAST and CCAR.¹⁷ FR Y-14 are the only source of information on the interbank fronting exposures that we are aware of. The FR Y-14 instructions define fronting exposures as follows.

¹⁷Detailed information on the FR Y-14 reporting form can be found on <https://www.federalreserve.gov/apps/reportforms/reportdetail.aspx?s0oYJ+5BzDZGwNsSjRJKDwRx0b5Kb1hL>

”Fronting exposures are those that represent a BHCs or IHCs exposure to fund certain obligations (e.g., swingline or letters of credit) on behalf of other participant lenders. For such exposures, BHCs and IHCs should indicate Option 18 in Field 20 “Credit Facility Type” and report their pro-rata portion of the stated commitment amount as one facility to the borrower and the fronting obligations as separate credit facilities to each of the lending group participants. For example, consider a facility with \$400 million committed balance where the BHC or IHC is the agent bank and the BHCs or IHCs pro-rata share of the commitment is 10% or \$40 million. Assume further that the credit facility contains a \$50 million sublimit. that the BHC or IHC, as agent, has an obligation to advance on behalf of lending group participants which may include swinglines, letters of credit and other fronting obligations. In this example, the agent BHC or IHC would report a \$40 million pro-rata commitment as one credit facility to the borrower and would report 90% of the \$50 million sublimit (or \$45 million) as separate pro-rata credit facilities to the lending group participants.”

Although banks were required to report fronting exposures in the third quarter of 2016, most banks began reporting fronting exposures in the first quarter of 2017. Fronting exposures are recorded as committed credit facilities between a fronting bank as a lender and a syndicate member bank as a borrower. We validate the institutional details described in the FR Y-14 instructions with a few specific loan contracts that public firms publish in their 10-K/Q filings. These agreements outline the amounts of sublimits and define the fronting bank.

To incorporate fronting exposures reported in the FR Y-14 data in our analysis, we consolidate the exposures to the bank holding company following the same consolidation procedure as in DealScan. Out of the \$400 billion in fronting exposures reported in Y-14 as of 2019:Q4, around \$100 billion involve entities that banks report as “masked” or “confidential.” We drop those observations from our analysis data. The median fronting exposure in FR Y-14 is around \$10 million and is significantly smaller than the sublimit loan amounts reported in Table 1 because it reflects the pro-rata shares of participating banks. Most credit facilities associated with fronting exposures are not utilized at quarter-ends when the Y-14 data are reported. This is consistent with the short-term nature of the underlying sublimit loans as well as with the fact that most banks have enough liquidity to pay their participation shares in normal times. However, banks self-report that the expected utilization rates at default could be substantial. For example, the median EAD is around 50 percent of the fronting exposures and banks anticipate that some fronting exposures would fully materialize.

Because DealScan contains a larger set of banks and is more exhaustive in its reporting of syndicated loans, it has a larger imputed fronting exposures than FR Y-14 over the common sample period. There also appear to be differences in the trends between the two datasets. The imputed fronting exposures decline from around \$450 billion at the end of 2016 to less than \$300 billion at the end of our sample. In contrast, there is an upward trend in FR Y-14, which partly reflects the entry of new reporting banks and renegotiation of sublimit amounts post-origination.

For example, many firms obtain sublimits following the origination of the main credit facility, and those are captured in FR Y-14 and not in DealScan. We conduct a number of robustness checks that compare our results using the DealScan approximation of fronting exposures with the actual interbank exposures measured in Y-14. Table 11 shows the liquidity shortfalls resulting from a scenario of a 100 percent drawdown rate calibrated using fronting exposures based on Y14 and the imputed values using DealScan.

Table 11: Comparison between analysis based on FR Y-14 and DealScan. All scenarios involve full drawdowns of credit lines and no STWF shock.

	2017		2018		2019	
	Y14	DS	Y14	DS	Y14	DS
Banks with shortfalls	80	81	71	70	73	73
Overall shortfall (\$ bn)	2408	2405	2536	2484	2522	2502
Overall shortfall (pct)	0.46	0.46	0.48	0.47	0.47	0.47
Fronting shortfall (\$ bn)	86	147	110	131	89	112
Fronting shortfall (pct)	0.39	0.48	0.43	0.48	0.36	0.48

B Definition of variables

The table below summarize the definitions of variables used in the analysis and the data source from which they are obtained.

Variable	Construction	Source
A. Borrower characteristics		
Total assets	Total consolidated assets	Compustat (WRDS)
Total liabilities	The sum of long-term debt and short-term debt	Compustat (WRDS)
Net worth	Total assets minus total liabilities	Compustat (WRDS)
Leverage	The ratio of total liabilities to total assets	Compustat (WRDS)
Tobin's Q	The sum of market value of equity and book value of debt divided by book value of assets	Compustat (WRDS)
Market-to-book ratio	Market value of equity divided by book value of equity	Compustat and CRSP (WRDS)
ROA	The ratio of operating income before taxes to total assets	Compustat (WRDS)
Market beta	12-month rolling window OLS coefficient estimate of borrower stock returns on the stock market return	CRSP (WRDS)
Bank beta	12-month rolling window OLS estimate of borrower returns on the bank stock index returns	CRSP (WRDS)
Cash and cash equivalents		Compustat (WRDS)
Total revolver	The sum of the drawn and undrawn revolver	CapitalIQ (WRDS)
Utilization on revolvers	Ratio of the drawn portion of the revolver to the total revolver	CapitalIQ (WRDS)
B. Bank characteristics		
Total assets	Total consolidated assets of the bank holding company	FR Y-9C
Insured deposits	The share of deposits with balances below the deposit insurance limit. Constructed at the bank subsidiary level and consolidated to the bank holding company.	Call Reports
CET1 capital	Common equity Tier 1 capital	FR Y-9C
HQLA	Combination of banks' holdings of cash and reserves, Treasuries, and eligible MBS securities with applicable Level 2 asset caps defined under the LCR. Holdings of assets that are eligible to be HQLA have been estimated by Ihrig et al. (2001) . We incorporate the same caps on Level 2 assets that are required under the LCR regulation.	Call Reports and FR Y-9C
STWF	Short-term wholesale funding includes all uninsured deposits and liabilities with outstanding maturities less than one year.	Call Reports and FR Y-9C
Insured deposits	All deposits with balances below the deposit insurance limit	Call Reports
C. Loan characteristics characteristics		
AISD	All-in-spread drawn	Refinitiv Loan Connector (DealScan)
AISU	All-in-undrawn spread	Refinitiv Loan Connector (DealScan)
Facility amount	The amount of credit facility which could be a credit line or a term loan	Refinitiv Loan Connector (DealScan)
Facility maturity	Maturity of the facility in months	Refinitiv Loan Connector (DealScan)
Sublimit	The amount of the sublimit credit line facility	Refinitiv Loan Connector (DealScan)
Fronting exposure	The interbank credit line between the agent (lead) bank and member banks that is in proportion to the pro-rata share of the member bank	FR Y-14
Imputed fronting exposure	The implied fronting exposures based on the sublimit amount and the pro-rate share of a member bank	Refinitiv Loan Connector (DealScan)